



DISTRIBUTORS

DISTRIBUTORS

TECHNICAL CATALOGUE

INDEX

-
- 4 GENERAL INFORMATION
 - 14 OPTIONS
 - 16 TECHNICAL DATA

INTRODUCTION TO THE CATALOGUE AND SYMBOLS USED

This catalogue consists of:

- A topic index;
- An introduction page;
- Texts and warnings divided into chapters, paragraphs and subsections.

SYMBOLS INDICATING DANGEROUS SITUATIONS OR VERY IMPORTANT INFORMATION.



WARNING!

Indicates risky situations for people, refers to accident prevention and suggests behavioral procedures.



NOTE!

Indicates useful information for the consultation of the manual and the smooth operation of the machine.



GENERAL INFORMATION

Introduction

Read and store this technical catalogue carefully. The information in it contained will be needed to correctly select the product.

The components are manufactured in compliance with the directives of the European community concerning the free circulation of industrial goods in the E.U. and is therefore supplied with all the necessary documentation.

The manufacturer has designed the components in order to ensure safe usage conditions.



Purpose of the catalogue

This catalogue is aimed to present the products in it contained to aid in the selection of the most suitable component for the required application.

SAI hydraulic motors will not be held liable for damages, accidents or drawbacks resulting to the failure to comply to the instructions given in this manual. SAI will also not be held liable for the modification and/or installation of non-authorized accessories.



Updating the catalogue

It is recommended to constantly keep this catalogue updated by adding amendments, updates or modifications made by the manufacturer. New pages will be sent in the event of minor changes and it will be up to the user to integrate them within the catalogue, replacing the existing ones in the related chapters or paragraphs. A revised copy of the catalogue will be sent to replace the existing version in the event of substantial changes to the components. At which point the old version of the catalogue must be destroyed.



COMMON DEFINITIONS

In this catalogue and most of the SAI documents the following specific terminology is used to describe specific key points of the SAI products.

The peak values indicate the maximum working conditions that the product can withstand. This means that the component can in fact work at its peak working conditions for a period of time that does not exceed 1% per minute and not more than 10 times per hour.

The cont.us working condition values are the ones that can be applied cont.usly without harming the product. This means that it is the working conditions at which the component can run until the end of its calculated lifetime.



HYDRAULIC FLUIDS

MINERAL OILS

For the combined lubrication wheel motors it is possible to use the same oil stated in the SAI motor catalogues: ISO VG 46. For the separated oil applications the lubricant suggested is: ISO VG 220 SAE 90 EP. SAI suggests to use good quality hydraulic mineral oil, preferably with additives for high pressure, anti-corrosive, anti-wear and anti-foaming. The hydraulic fluid used has to be chosen in order for the viscosity is within the indicated range to the normal working temperature conditions.

Admissible temperature range:

Ideal: +30°C to +50°C

Allowable: -20°C to +80°C

On request our motors can be manufactured to operate at lower (down to -40°C) or higher (up to +120°C) temperatures.

Operating viscosity range:

Ideal: 40 cSt to 60 cSt

Allowable: 25 cSt to 150 cSt



After the initial start up please verify the level of the lubricant periodically and top up whenever necessary. The first oil change has to be made after 15-20 hours of operation. The following changes must be performed after 800-1000 hours, or one year of operation, whichever comes first.

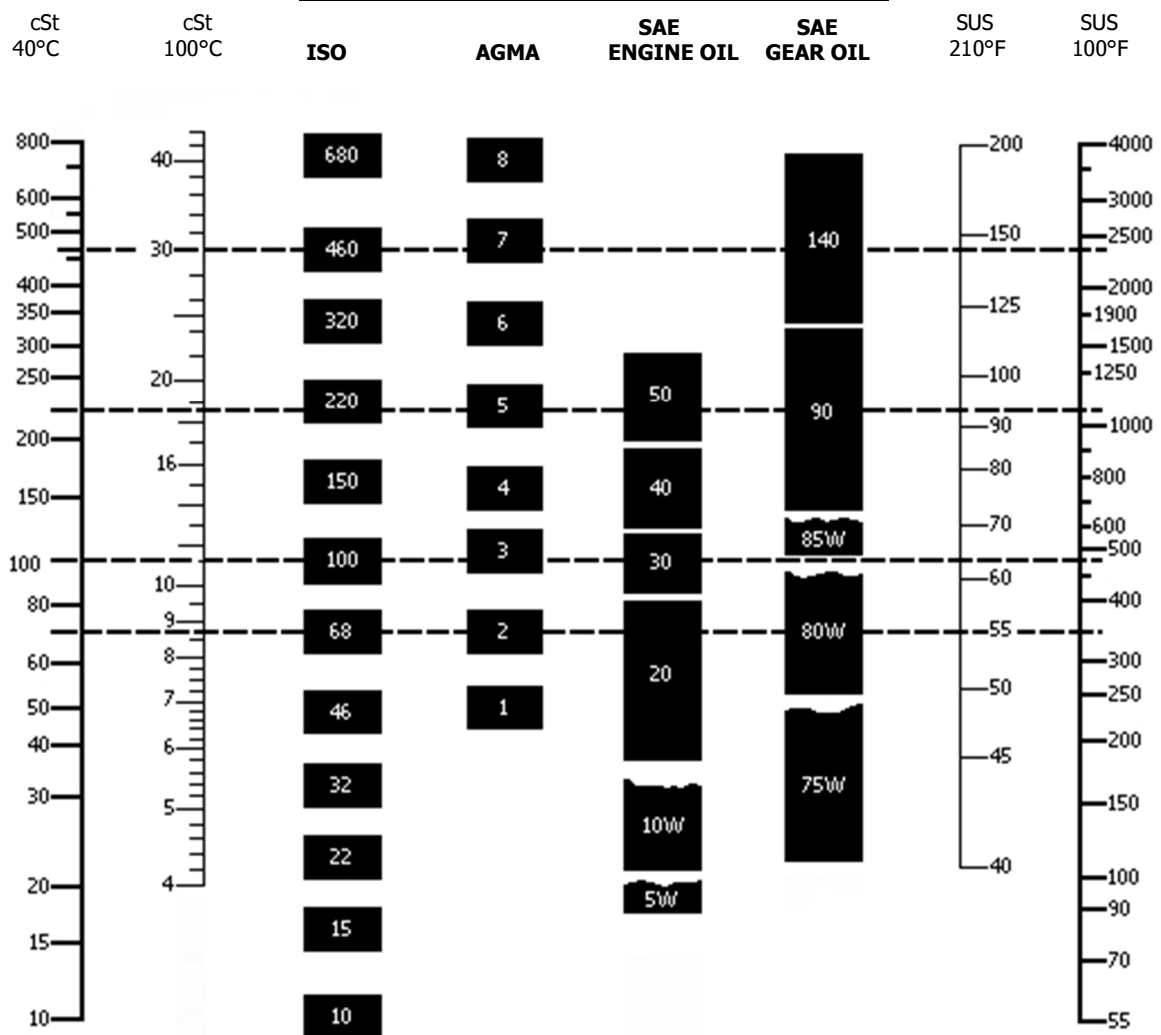
FIRE RESISTANT FLUIDS

- (i) **Synthetic fluids:** (phosphate esters, polyesters, ...). These fluids have similar characteristics to mineral oils and the same temperature and viscosity ranges are applicable. These kinds of fluids may, however, require seals of suitable material (such as FKM seals) which are available on request.
- (ii) **Water based fluids:** (water-oil emulsions, water-glycol solutions, ...) due to the low viscosity of these fluids the lifetime of the components is reduced.

KINEMATIC VISCOSITIES

GRADE SYSTEMS

SAYBOLT VISCOSITIES





START UP

Before connecting the pipes, make sure that they are clean and that there is no rust.

On the first start up remove all air from the hydraulic circuit. Make sure that there are no oil leaks from the joints and from the body.

In the case of separate oil between unit and motor:

Once the unit is secured to the motor fill it with hydraulic oil (see hydraulic fluids on p. 14) using a drainage hole.

The products are tested at the factory and do not need a testing period.



FILTRATION

SAI recommends using filters with gradation up to 25 μm , preferably 10 μm .

SAI products have a good resistance to contaminated oil; however filter efficiency and therefore clean oil, are important for the correct functioning and reliability of all the components in the hydraulic system.

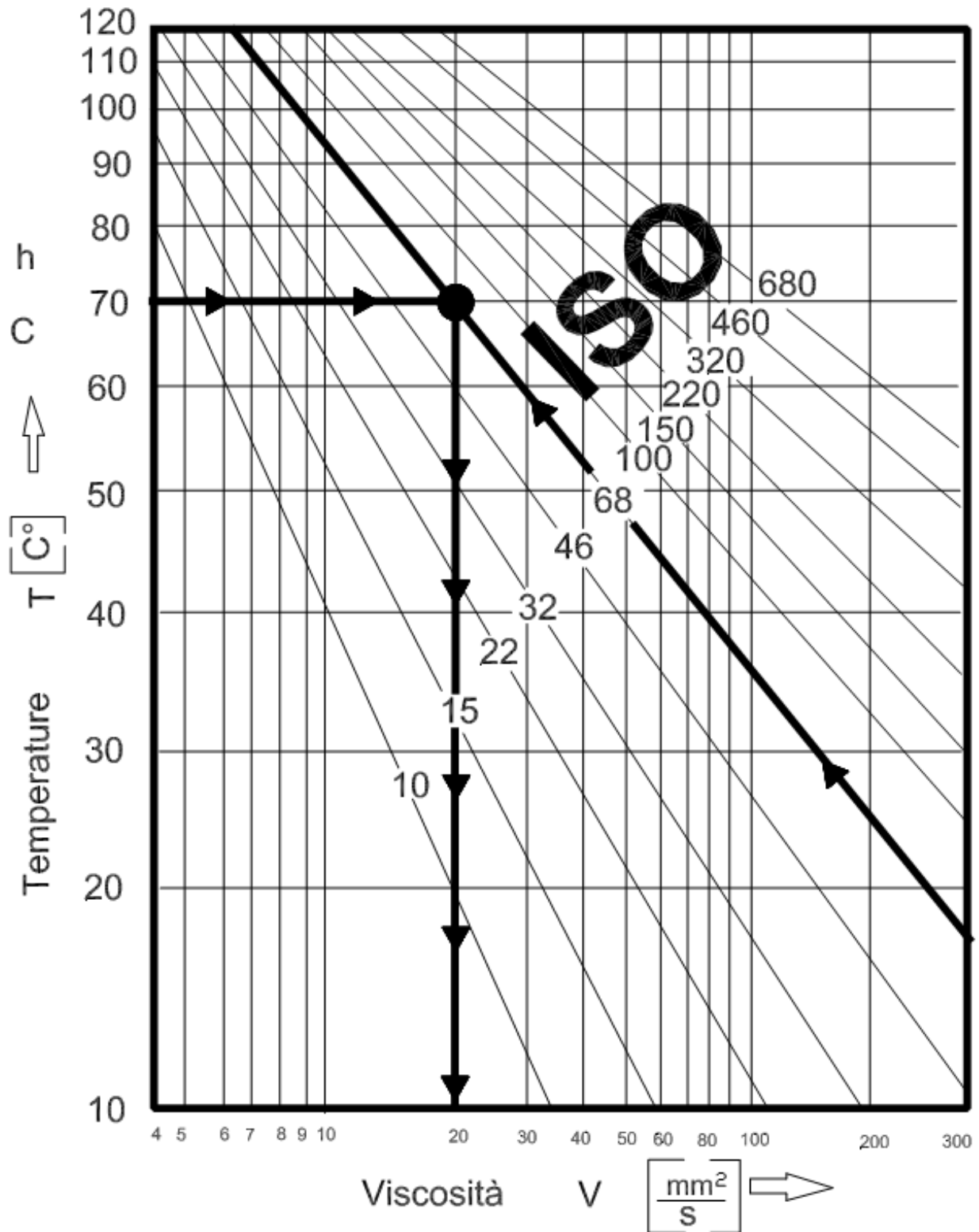
The efficiency of the filtering agents is greatly reduced with a progressive accumulation of filtered particles, therefore the filters have to be regularly checked. It is recommended to pay close attention at the first start up of the hydraulic system or in the event of a replacement of any component for damage or excessive usage. It is advisable to follow the filter manufacturer's recommendations for its life span and cleaning or substitution cycles.

PIPES AND CONNECTIONS

SAI recommends the use of high quality piping and connections for high pressure hydraulic applications.

Follow manufacturer's recommendations for pipe sizes, in any case do not use pipes which are smaller than the port connections; to reduce the effects of oil compressibility, use pipes with minimum possible width and diameter and maximum rigidity; to reduce the effects of a load loss avoid sharp corners, restrictions and high flow speed.

ISO viscosity classification system.

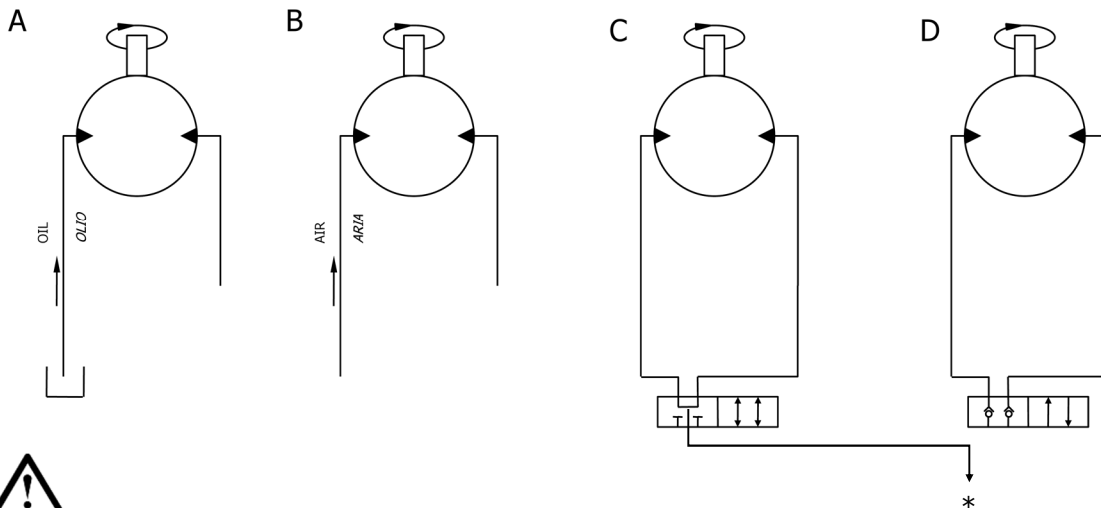




SPECIAL CONDITIONS OF USE: FREE WHEELING

All SAI motors can be disconnected from the hydraulic circuit and driven externally for applications where freewheeling, free fall or breakdowns may be present.

The diagrams below show some possible circuit configurations for motor disconnection and/or operation in freewheeling:



A: Freewheeling with oil in the circuit. This condition is suitable only for low speeds. With the speed increase it will be necessary to pressurize the inlet to prevent noise due to cavitation.

B: Freewheeling with air in the circuit. This condition is ideal for high speed freewheeling applications. The transition from or to normal operation must be done at low speed and low pressure while the pistons are emptying or filling with oil.

C: "Short circuit" freewheeling. The motor runs with the inlet and outlet ports connected. This condition is suitable to applications that require speed control with a throttle.

WARNING!

Danger of overheating in unfavourable conditions, especially with throttle.

D: "Vacuum freewheeling". This is the favourable freewheeling condition for fixed displacement motors, especially for very high speeds. The check valves allow the oil to be expelled from the pistons which subsequently operate under vacuum conditions. The motors can operate in these conditions for several hours without being damaged or overheating. Torque absorption is constant with speed and equivalent to 2 - 3 bar of pressure.

The transition from or to normal operation must be done at low speed and low pressure while the pistons are emptying or filling with oil.

* BOOST PRESSURE SHOULD BE PROVIDED TO AVOID CAVITATION



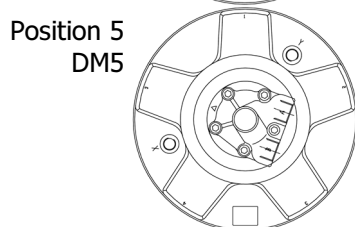
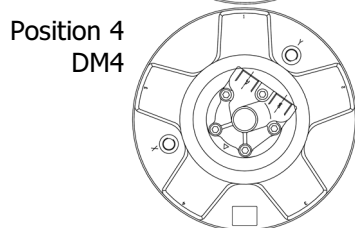
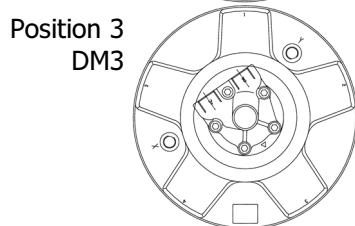
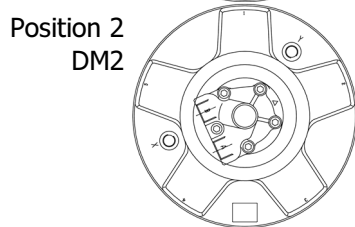
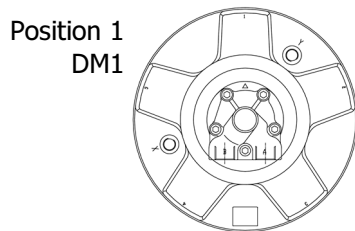
DISTRIBUTOR COVER ORIENTATION

SAI motors can be provided with the distributor cover orientated in any of the following directions. These are selectable among the following positions:

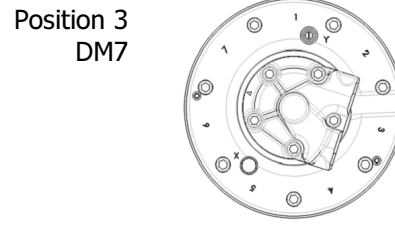
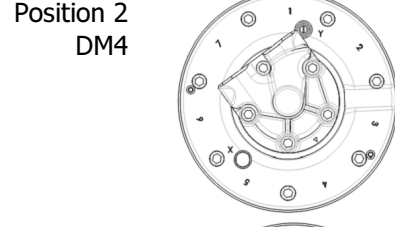
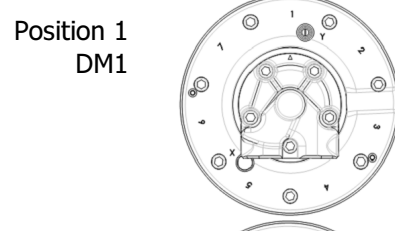
DM1 for position 1, DM2 for position 2 etc.

This position has to be stated at the end of the full description of the motor.


If no specification is made the standard position is DM1.



Five piston motor.



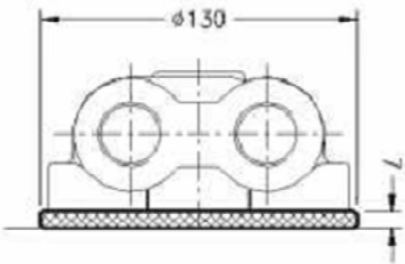
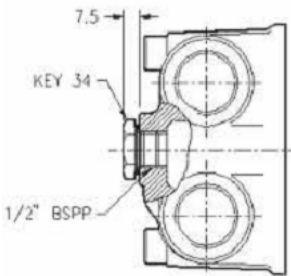
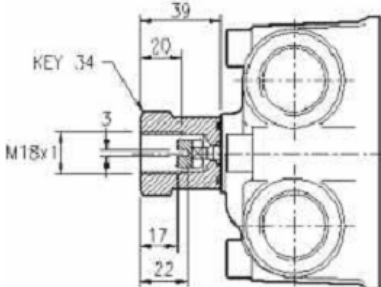
Seven piston motor.

		Technical Datasheet										Tab.05	
		METRIC SYSTEM BOLT TORQUE SETTINGS										REV.	2
NORM		CLASS OF RESISTANCE											
DIN 267		5.8		6.8		8.8		10.9		12.9			
		5S		6S		8G		10K		12K			
Ø Bolt	Hexagon mm	Pitch coarse mm	Pitch fine Mm	Pitch coarse Nm	Pitch fine Nm	Pitch coarse Nm	Pitch fine Nm	Pitch coarse Nm	Pitch fine Nm	Pitch coarse Nm	Pitch fine Nm	Pitch coarse Nm	Pitch fine Nm
M2	4	0.4	-	0.2 0.2	- -	0.2 0.3	- -	0.3 0.4	- -	0.4 0.5	- -	0.5 0.6	- -
M2.5	5	0.45	-	0.4 0.5	- -	0.5 0.6	- -	0.6 0.8	- -	0.9 1.1	- -	1.1 1.3	- -
M3	5.5	0.5	-	0.7 0.8	- -	0.8 1.0	- -	1.1 1.3	- -	1.5 1.9	- -	1.8 2.3	- -
M3.5	6	0.6	-	1.1 1.3	- -	1.3 1.5	- -	1.7 2.1	- -	2.4 2.9	- -	2.8 3.5	- -
M4	7	0.7	-	1.6 1.9	- -	1.9 2.3	- -	2.5 3.1	- -	3.5 4.3	- -	4.2 52	- -
M5	8	0.8	-	3.1 3.8	- -	3.7 4.5	- -	4.9 6.0	- -	6.9 8.5	- -	8.3 10.0	- -
M6	10	1,0	-	5.3 6.5	- -	6.4 7.8	- -	8.5 10.0	- -	12.0 15.0	- -	14.0 18.0	- -
M7	11	1.0	-	8.7 11.0	- -	10.0 13.0	- -	14.0 17.0	- -	20.0 24.0	- -	24.0 29.0	- -
M8	13	1.25	1.0	13.0 16.0	14.0 17.0	15.0 19.0	16.0 20.0	20.0 25.0	22.0 27.0	29.0 35.0	31.0 38.0	34.0 42.0	37.0 46.0
M10	17	1.5	1.25	25.0 31.0	26.0 33.0	30.0 37.0	32.0 39.0	40.0 50.0	42.0 53.0	57.0 70.0	59.0 74.0	68.0 84.0	71.0 89.0
M12	19	1.75	1.5	43.0 53.0	45.0 56.0	52.0 64.0	54.0 67.0	69.0 85.0	72.0 89.0	97.0 119.0	101.0 125.0	116.0 143.0	121.0 150.0
M14	22	2.0	1.5	68.0 84.0	74.0 92.0	82.0 101.0	89.0 111.0	110.0 135.0	118.0 148.0	154.0 190.0	166.0 208.0	185.0 228.0	199.0 250.0
M16	24	2.0	1.5	106.0 132.0	112.0 141.0	128.0 159.0	135.0 170.0	128.0 212.0	180.0 226.0	240.0 298.0	253.0 318.0	287.0 357.0	303.0 382.0
M18	27	2.5	2.0	147.0 182.0	155.0 194.0	176.0 218.0	186.0 233.0	235.0 290.0	248.0 310.0	330.0 402.0	349.0 436.0	397.0 490.0	419.0 523.0
M20	30	2.5	2.0	208.0 258.0	217.0 273.0	249.0 310.0	261.0 327.0	332.0 413.0	347.0 436.0	467.0 580.0	489.0 614.0	561.0 697.0	586.0 736.0
M22	34	2.5	2.0	284.0 355.0	296.0 373.0	341.0 426.0	355.0 448.0	454.0 568.0	474.0 597.0	639.0 798.0	666.0 840.0	767.0 958.0	799.0 1008.0
M24	36	3.0	2.0	359.0 446.0	386.0 488.0	431.0 535.0	463.0 586.0	574.0 714.0	617.0 781.0	808.0 1004.0	868.0 1098.0	969.0 1204.0	1041.0 1317.0
M27	41	3.0	2.0	525.0 656.0	561.0 712.0	630.0 788.0	673.0 855.0	840.0 1050.0	897.0 1139.0	1181.0 1477.0	1261.0 1602.0	1418.0 1772.0	1513.0 1923.0
M30	46	3.5	2.0	716.0 893.0	780.0 994.0	859.0 1072.0	936.0 1193.0	1146.0 1429.0	1248.0 1590.0	1611.0 2009.0	1754.0 2236.0	1933.0 2411.0	2105.0 2648.0
M33	50	3.5	2.0	968.0 1213.0	1045.0 1335.0	1162.0 1456.0	1254.0 1602.0	1549.0 1941.0	1673.0 2136.0	2179.0 2792.0	2351.0 3004.0	2614.0 3275.0	2821.0 3605.0
M36	55	4.0	3.0	1248.0 1561.0	1310.0 1658.0	1498.0 1873.0	1572.0 1989.0	1997.0 2497.0	2096.0 2652.0	2809.0 3511.0	2948.0 3730.0	3370.0 4213.0	3537.0 4476.0
M39	60	4.0	3.0	1615.0 2026.0	1690.0 2144.0	1938.0 2431.0	2028.0 2573.0	2584.0 3242.0	2703.0 3430.0	3633.0 4559.0	3802.0 4824.0	4360.0 5471.0	4562.0 5789.0

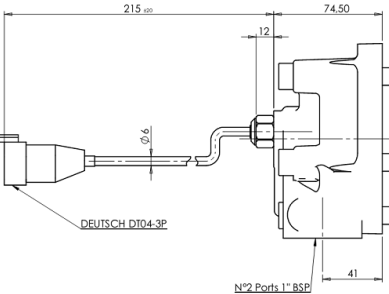
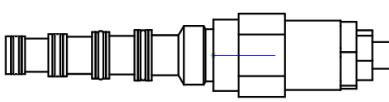
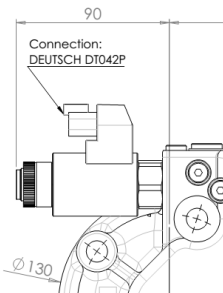
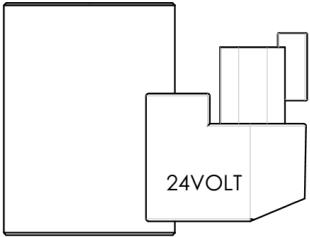
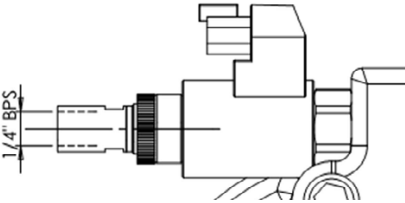
The torque values are to be considered as reference only as they can vary depending on the kind of coupling (rigid, semi-rigid, elastic, etc.), on the material on which the bolts have to be fixed on, on the length of the bolt, on the kind of wrench used (impact wrench, friction wrench, cont.us torque wrench, etc.), on the finishing condition of the thread, etc. Therefore it is advised to test the couplings to identify the most correct way to tighten them. In the event that the coupling is done with locknuts or self-locking nuts the value of the torque has to be increased by approximately 15%.

D30	3/4" BSP	With axial ports
D31	3/4" BSP	
D36	1" 1/16" UNF	
D37	1" SAE 3000psi	
D310	1" BSP	
D311	1" BSP	With purge valve 20 lit 20 bar
D312	3/4" BSP	With purge valve 20 lit 20 bar
D313	1" BSP	With shuttle valve for high pressure pilot
D314	1" BSP	With anti-cavitation valve
D316	1" 5/16" UNF	
D320	1" BSP	
D322	3/4" BSP	With anti-cavitation valve
D40	1" BSP	
D47	1" SAE 3000psi	
D47R	1" SAE 6000psi	
D47D	1" SAE 6000psi	With the hydraulic valve for the pilot of the dual displacement
D47V	1" SAE 6000psi	With electrical proportional valve for pilot the displacement
D48	1" BSP	With double sliding spool pressure relief valves, 240 bar, 150 l/min
D49	1" BSP	With double sliding spool pressure relief valves, 210 bar, 80 l/min
D416	1" 5/16" UNF	
D481	1" BSP	With double sliding spool pressure relief valves, 240 bar, 150 l/min. with purge valve, 20 l/min, 20 bar
D491	1" BSP	With double sliding spool pressure relief valves, 210 bar, 150 l/min. with purge valve, 20 l/min, 20 bar
D504	1" BSP	With double overcentre valve 10:1, 120 l/min, 270 bar and shuttle valve for high pressure pilot
D51	1" BSP	With overcentre valve and shuttle valve for high pressure pilot
D510	1" BSP	For free-wheeling in "short-circuit"
D524	1" BSP	With double overcentre valve and shuttle valve for high pressure pilot
D90	1 1/2" SAE 6000psi	
D907	1 1/2" SAE 6000psi	
D907D	1 1/2" SAE 6000psi	With the hydraulic valve for the pilot of the dual displacement
D907V	1 1/2" SAE 6000psi	With electrical proportional valve for pilot the displacement
D250	2" SAE 6000psi	

OPTIONS

<p>DBM/DGM</p>		<p>DBM: Kit for high speed distributions D3 ... D3 ... Distributors with DBM option reach the speed limit distributors D4 ... DGM: Kit for high pressure distributions D3 ...</p>
<p>C</p>	<p>/</p>	<p>Rotary valve for low noise.</p>
<p>K</p>		<p>Threaded hole 1/2 "BSP for installation support on the distributor tacho drive.</p>
<p>J</p>		<p>Tacho drive support.</p>

OPTIONS

<p>HU</p>		<p>Sensor hall effect unidirectional integrated for the speed reading.</p>
<p>PI</p>		<p>Only applies to distributions and D47D D907D. Change displacement piloted reversed.</p>
<p>VPI</p>		<p>Applicable on engines fitted with dual displacement distributions D47D, D907D. Change displacement piloted reversed.</p>
<p>V24</p>		<p>Applicable on dual displacement motors that mount D47V and D907V. Piloting displacement with a voltage of 24 volts. (instead of the standard 12 volts)</p>
<p>OV</p>		<p>Only applies to distributions D47V and D907V. It allows you to stop the driving gear displacement with a pilot signal.</p>

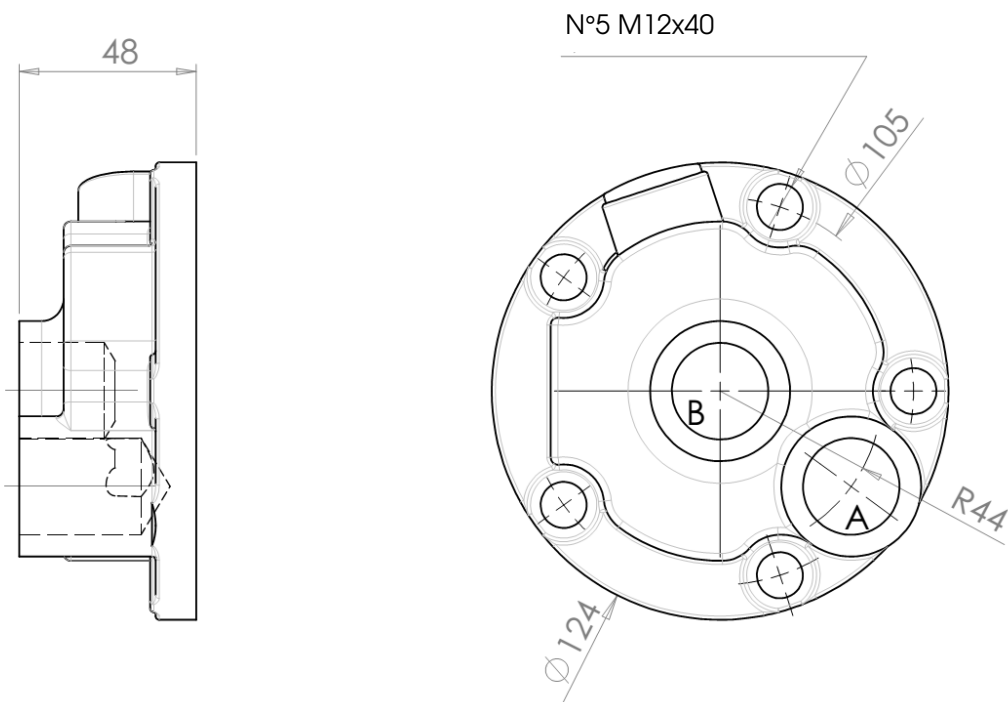
D30

Distributor with axial ports 3/4" BSP.

Details

	Speed [rpm]	Pressure [bar]	Flow [l/min]
Cont.	300	140	200
Peak	500	280	400

Mass 2.5 kg



OPTIONS	MOUNTABLE ON
DBM	GM05, GM1, GM2 P05, P1
DGM	
C	

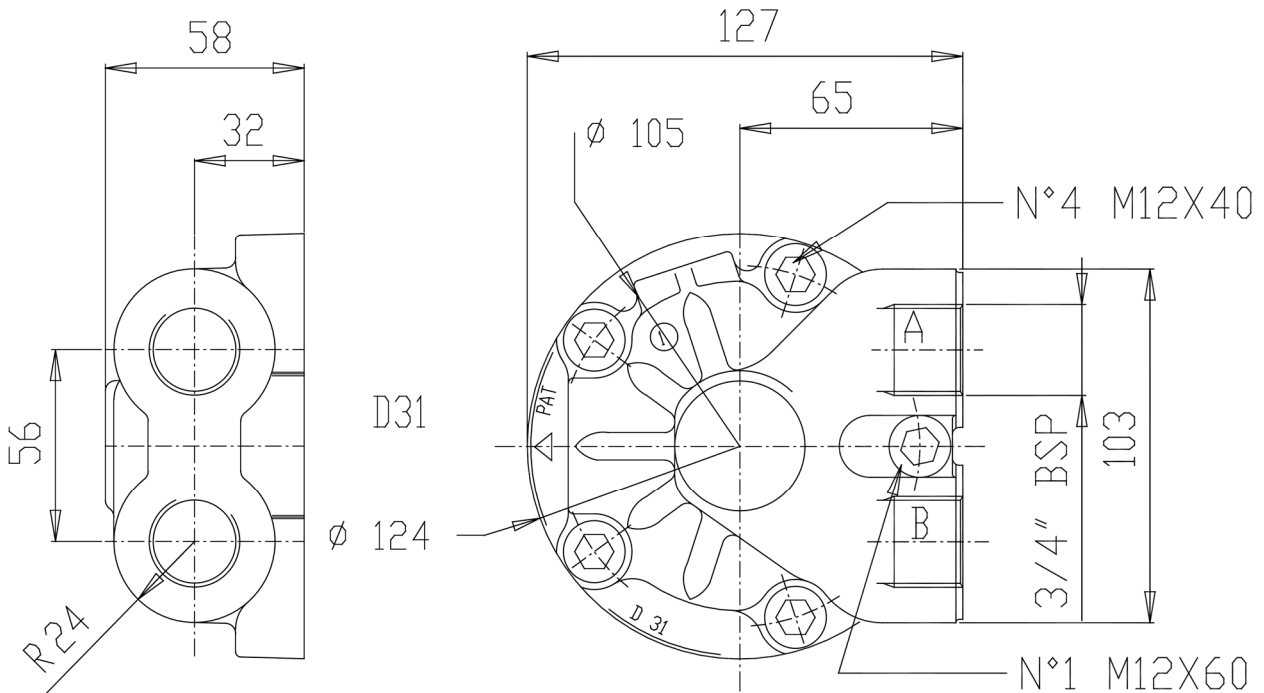
D31

Distributor with ports 3/4" BSP.

Details

	Speed [rpm]	Pressure [bar]	Flow [l/min]
Cont.	300	250	200
Peak	500	500	400

Mass 4 kg



OPTIONS	MOUNTABLE ON
DBM	GM05, GM1, GM2, GM3, GM4, GM5A P05, P1, P2 Only with DBM: GS05, GS1, GS2, GS3, GS4, GS5A BD1, BD2 GK3(A), GFK3(A), GK4, GFK4
DGM	
C	
K	
J	

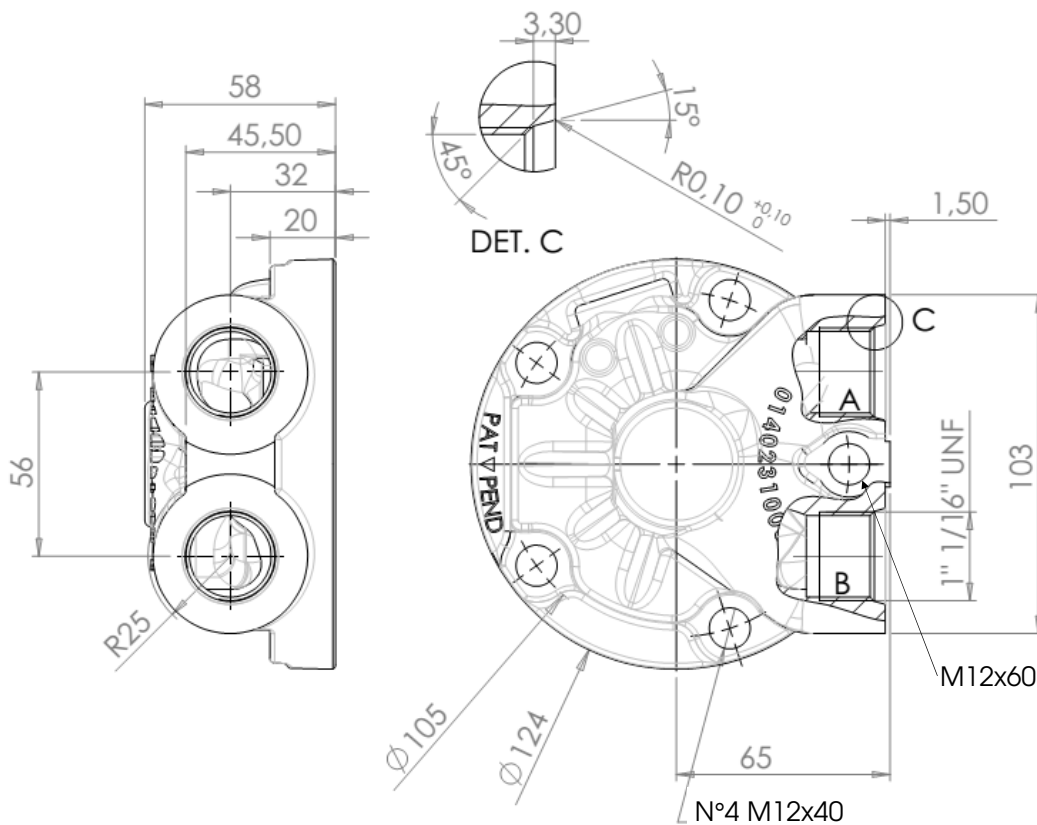
D36

Distributor with ports 1" 1/16" UNF.

Details

	Speed [rpm]	Pressure [bar]	Flow [l/min]
Cont.	300	250	200
Peak	500	500	400

Mass 4 kg



OPTIONS	MOUNTABLE ON
DBM	GM05, GM1, GM2, GM3, GM4, GM5A P05, P1, P2 Only with DBM: GS05, GS1, GS2, GS3, GS4, GS5A BD1, BD2 GK3(A), GFK3(A), GK4, GFK4
DGM	
C	
K	
J	

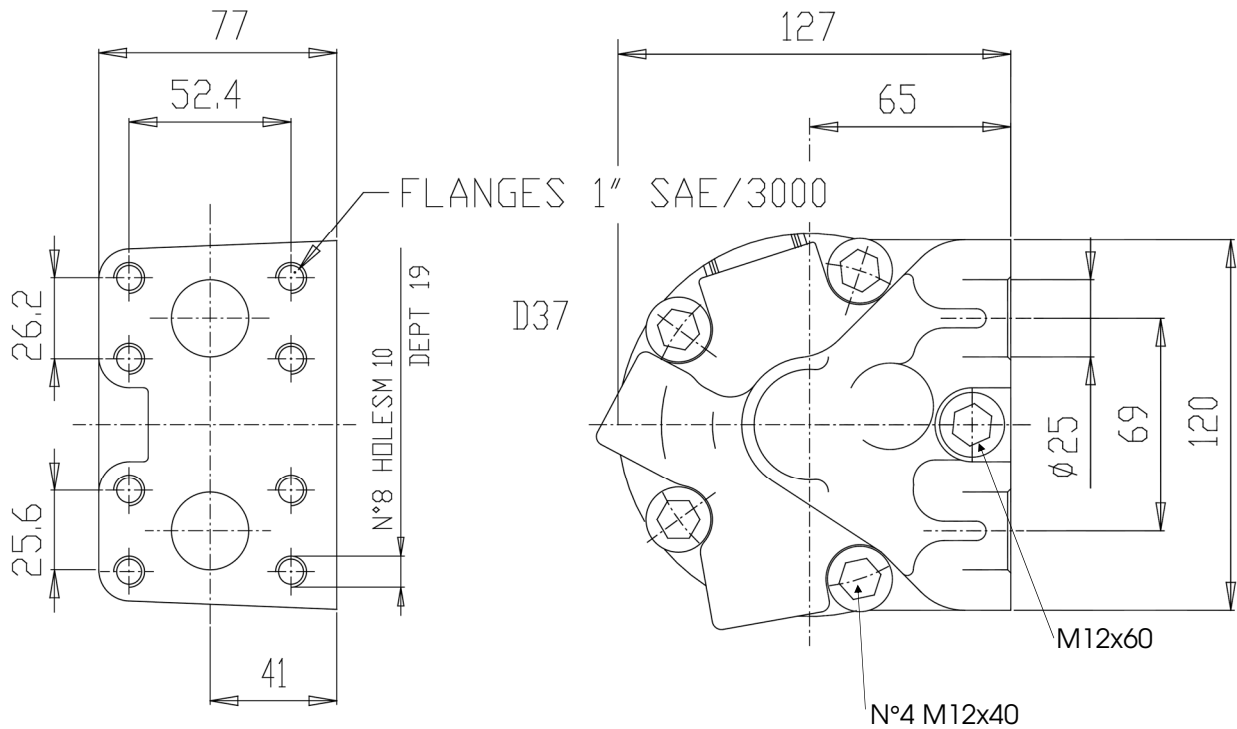
D37

Distributor with ports 1" SAE 3000 psi .

Details

	Speed [rpm]	Pressure [bar]	Flow [l/min]
Cont.	300	250	200
Peak	500	348	400

Mass 4.5 kg



OPTIONS	MOUNTABLE ON
DBM	GM05, GM1, GM2, GM3, GM4, GM5A P05, P1, P2 Only with DBM: GS05, GS1, GS2, GS3, GS4, GS5A BD1, BD2 GK3(A), GFK3(A), GK4, GFK4
DGM	
C	
K	
J	

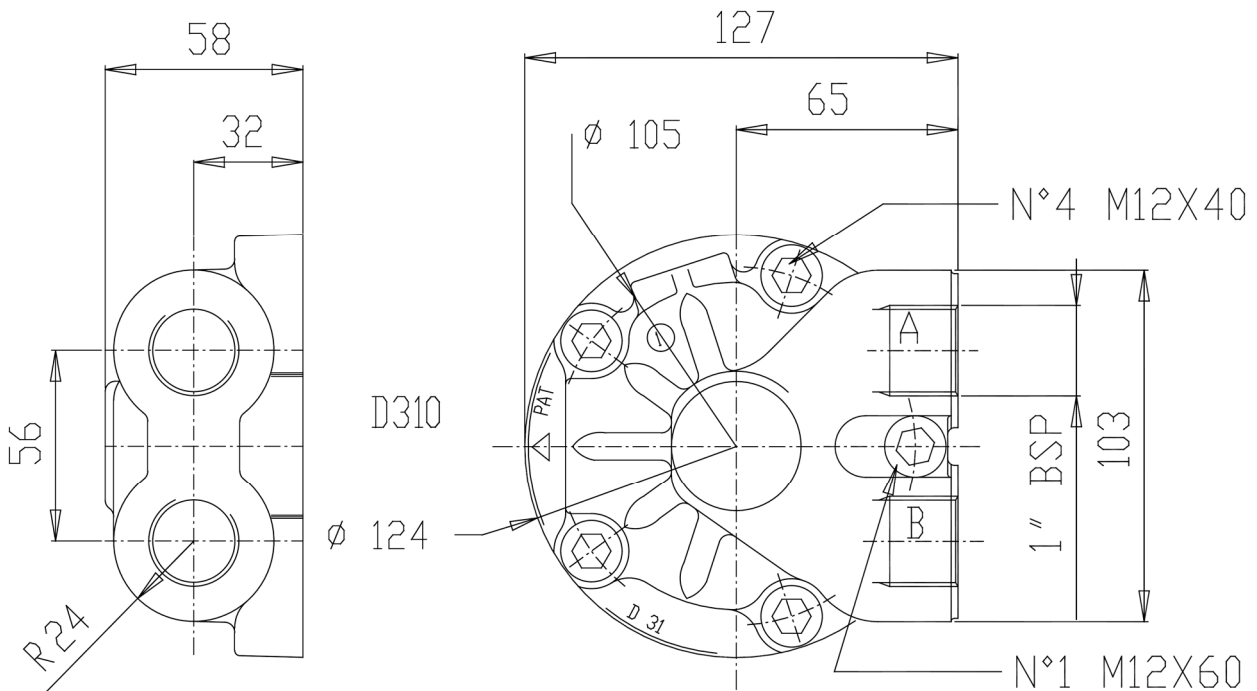
D310

Distributor with ports 1" BSP.

Details

	Speed [rpm]	Pressure [bar]	Flow [l/min]
Cont.	300	250	200
Peak	500	500	400

Mass 4 kg



OPTIONS	MOUNTABLE ON
DBM	GM05, GM1, GM2, GM3, GM4, GM5A P05, P1, P2 Only with DBM: GS05, GS1, GS2, GS3, GS4, GS5A BD1, BD2 GK3(A), GFK3(A), GK4, GFK4
DGM	
C	
K	
J	

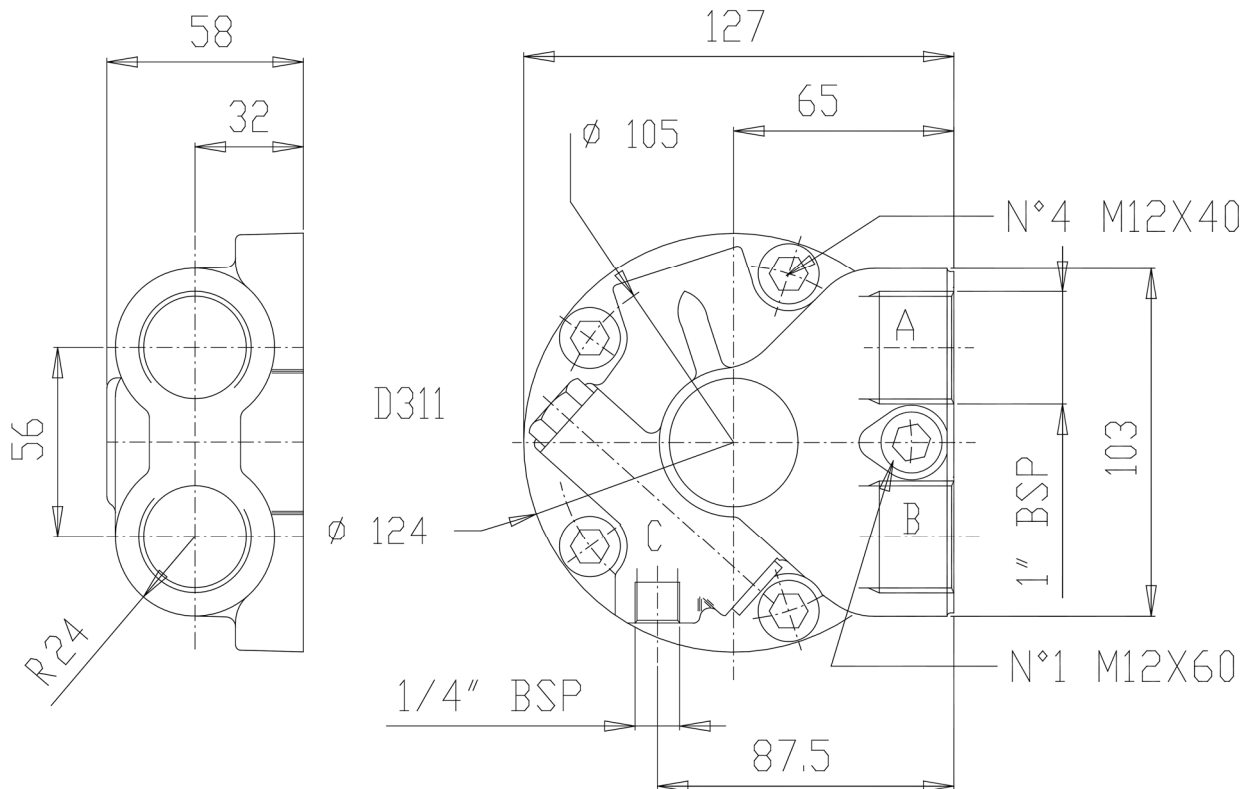
D311

Distributor with ports 1" BSP, with purge valve 20 lit. 20 bar.

Details

	Speed [rpm]	Pressure [bar]	Flow [l/min]
Cont.	300	250	200
Peak	500	500	400

Mass 4.5 kg



OPTIONS		MOUNTABLE ON
DBM		GM05, GM1, GM2, GM3, GM4, GM5A P05, P1, P2 Only with DBM: GS05, GS1, GS2, GS3, GS4, GS5A BD1, BD2 GK3(A), GFK3(A), GK4, GFK4
DGM		
C		
K		
J		

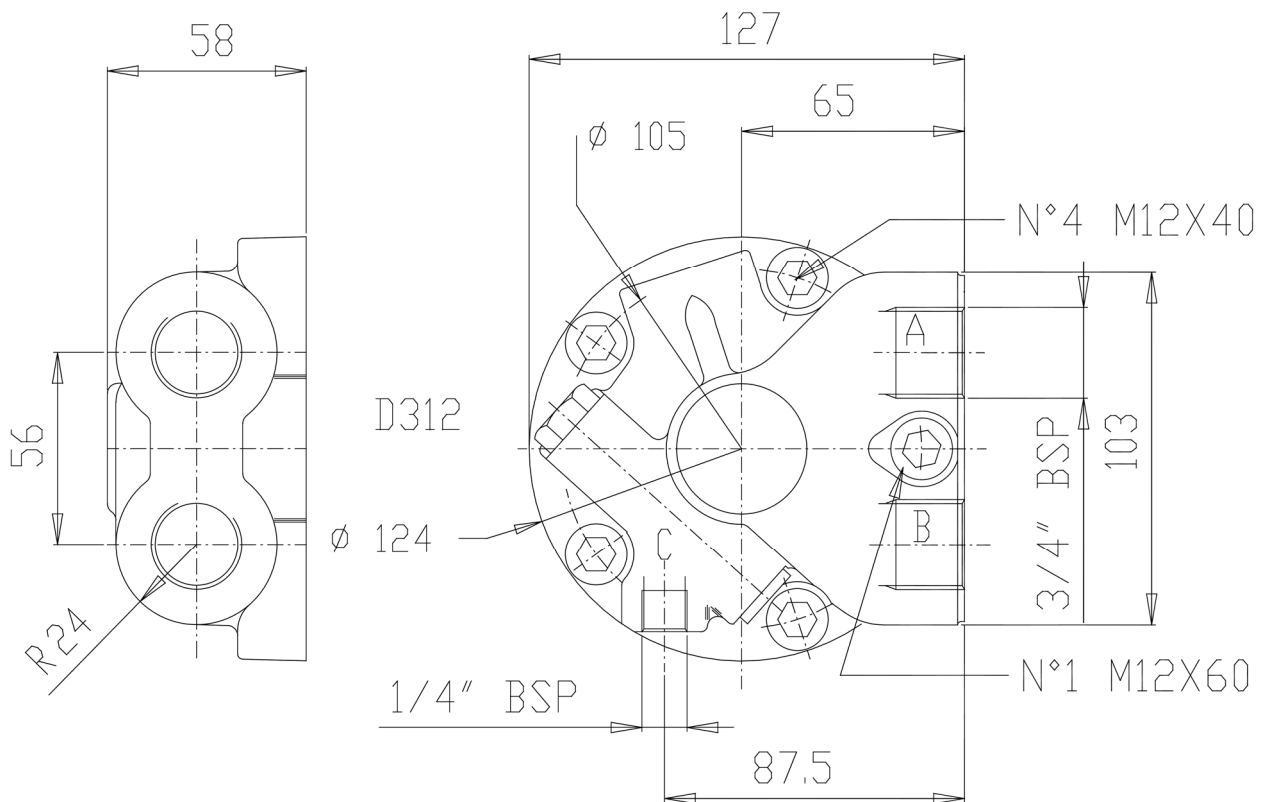
D312

Distributor with ports 3/4" BSP, with purge valve 20 lit. 20 bar.

Details

	Speed [rpm]	Pressure [bar]	Flow [l/min]
Cont.	300	250	200
Peak	500	500	400

Mass 4.5 kg



OPTIONS		MOUNTABLE ON
DBM		<p>GM05, GM1, GM2, GM3, GM4, GM5A P05, P1, P2</p> <p>Only with DBM: GS05, GS1, GS2, GS3, GS4, GS5A BD1, BD2 GK3(A), GFK3(A), GK4, GFK4</p>
DGM		
C		
K		
J		

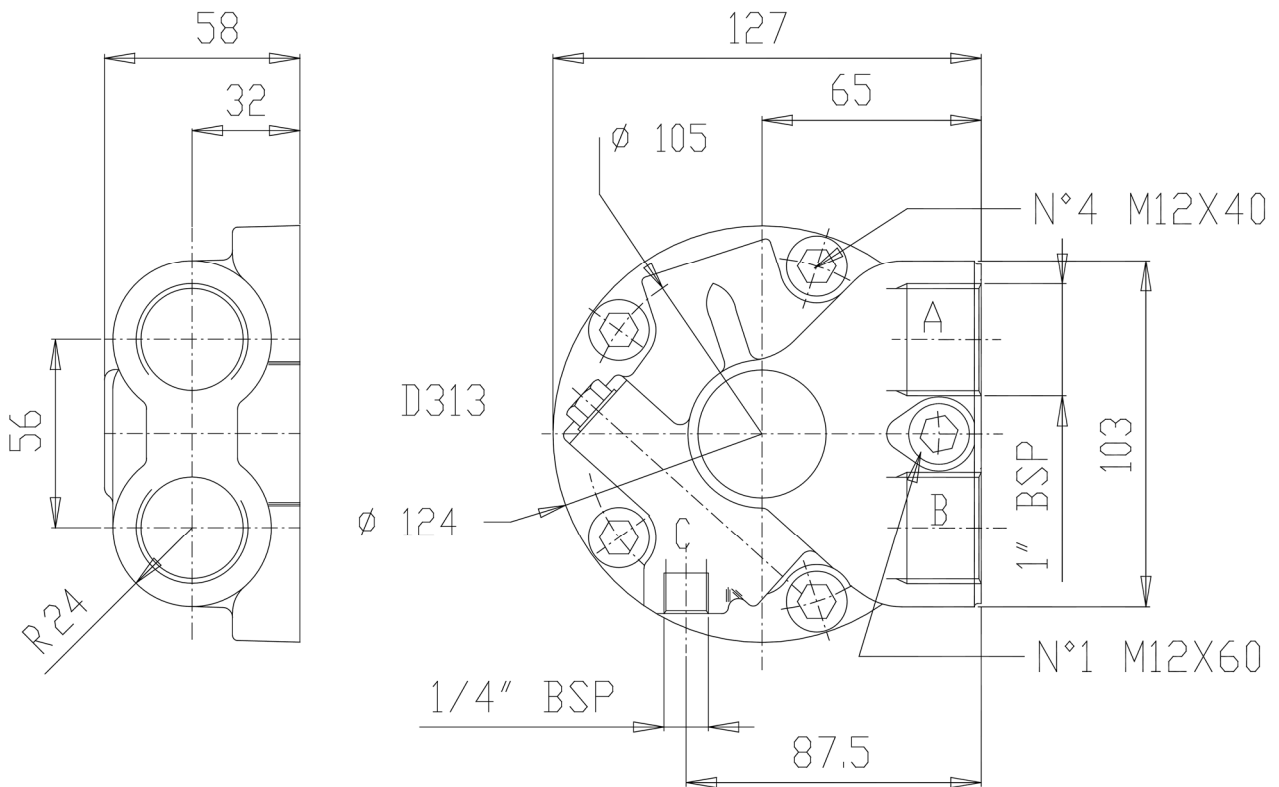
D313

Distributor with ports 1" BSP, with shuttle valve for high pressure pilot.

Details

	Speed [rpm]	Pressure [bar]	Flow [l/min]
Cont.	300	250	200
Peak	500	500	400

Mass 4.5 kg



OPTIONS		MOUNTABLE ON
DBM		GM05, GM1, GM2, GM3, GM4, GM5A P05, P1, P2
DGM		Only with DBM: GS05, GS1, GS2, GS3, GS4, GS5A BD1, BD2
C		GK3(A), GFK3(A), GK4, GFK4
K		
J		

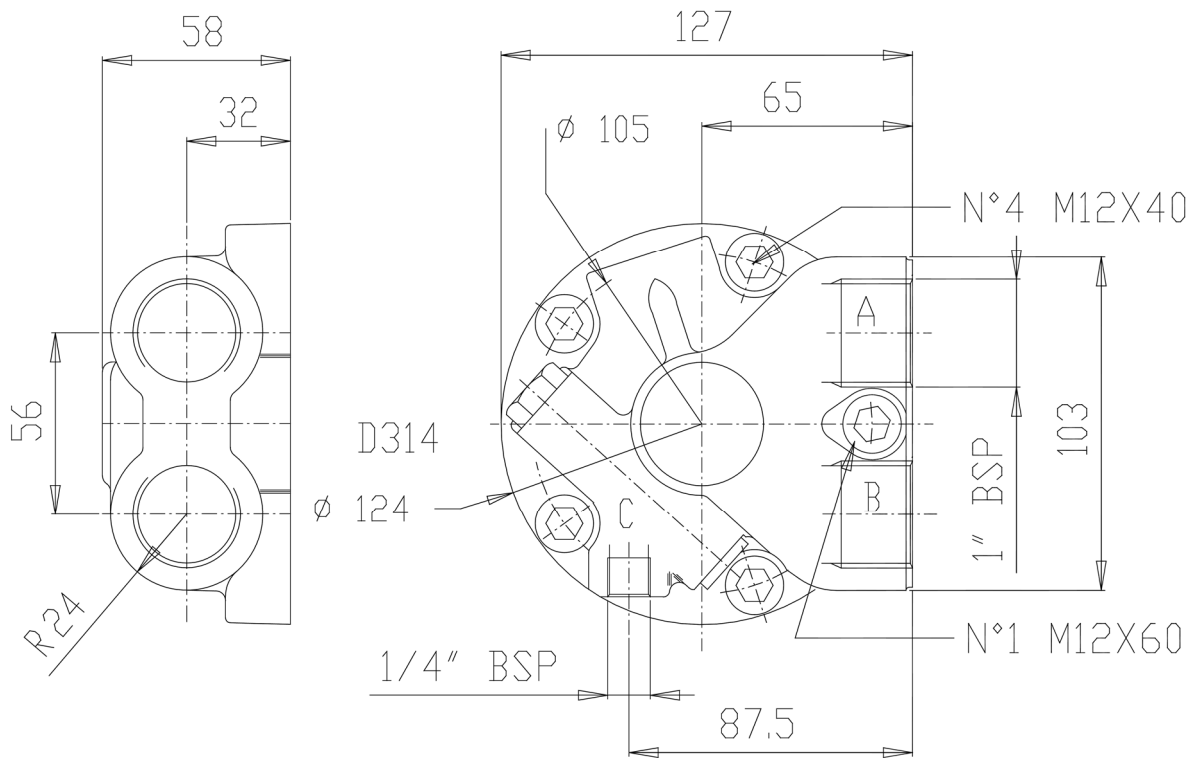
D314

Distributor with ports 3/4" BSP, with anti-cavitation valve.

Details

	Speed [rpm]	Pressure [bar]	Flow [l/min]
Cont.	300	250	200
Peak	500	500	400

Mass 4.5 kg



OPTIONS		MOUNTABLE ON
DBM		<p>GM05, GM1, GM2, GM3, GM4, GM5A P05, P1, P2</p> <p>Only with DBM: GS05, GS1, GS2, GS3, GS4, GS5A BD1, BD2 GK3(A), GFK3(A), GK4, GFK4</p>
DGM		
C		
K		
J		

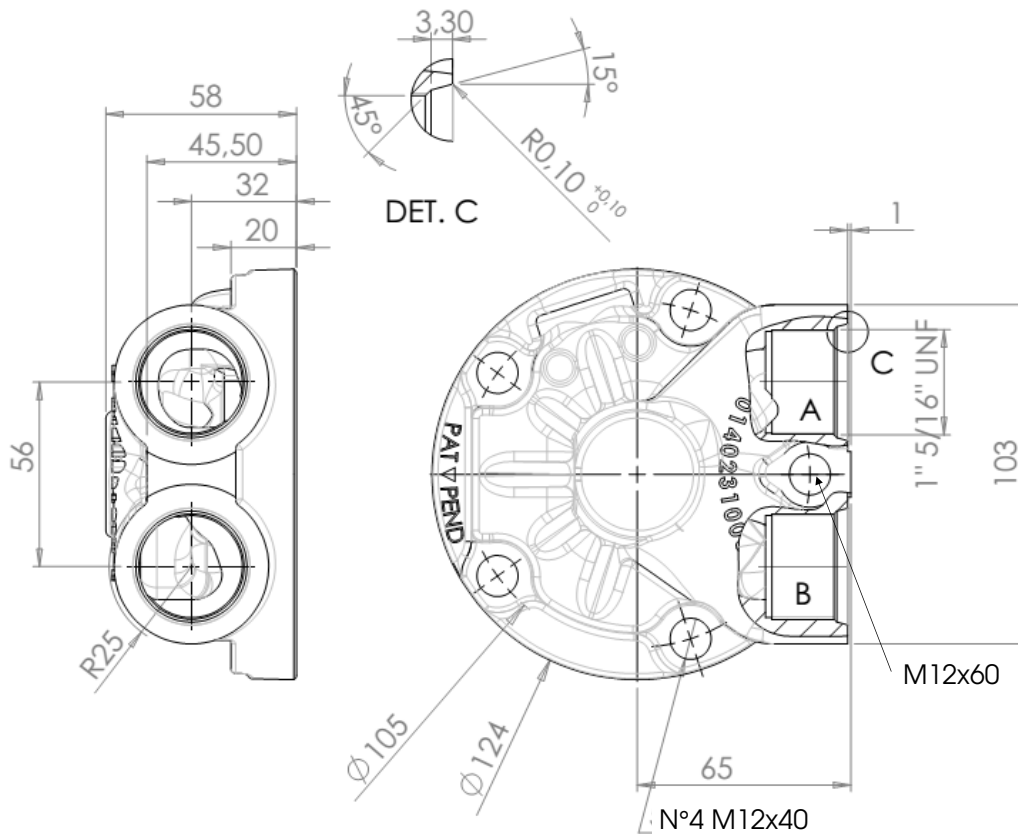
D316

Distributor with ports 1" 5/16" UNF .

Details

	Speed [rpm]	Pressure [bar]	Flow [l/min]
Cont.	300	250	200
Peak	500	500	400

Mass 5 kg



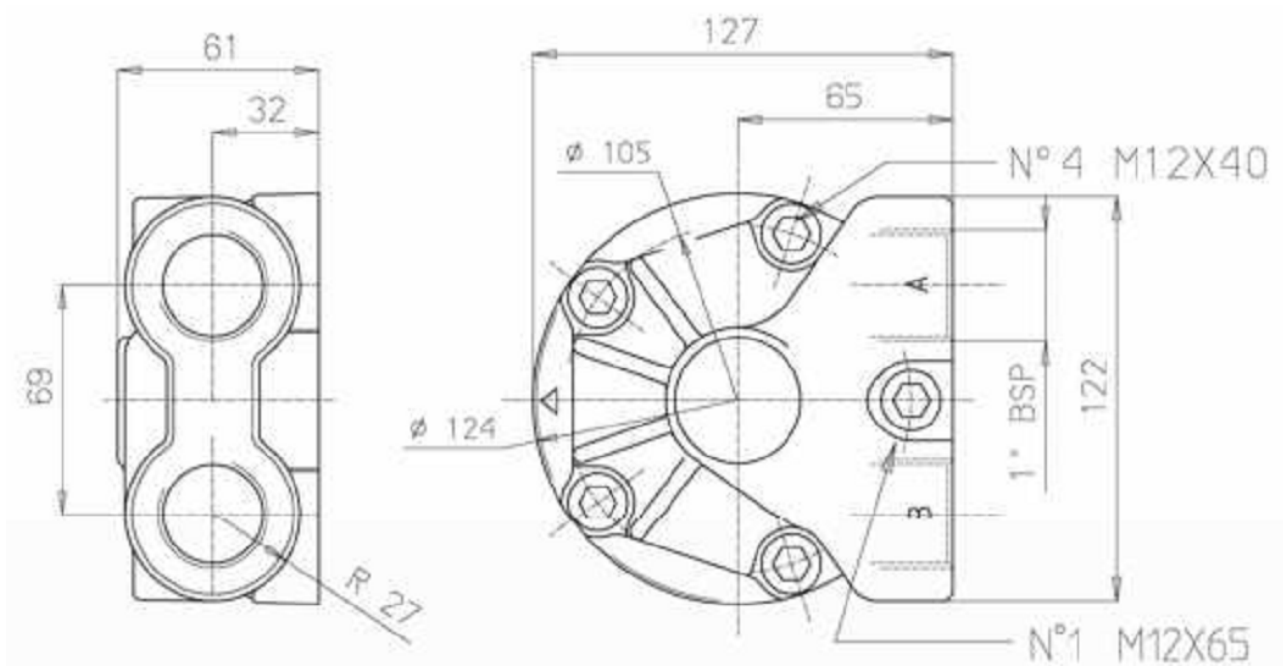
OPTIONS	MOUNTABLE ON
DBM	GM05, GM1, GM2, GM3, GM4, GM5A P05, P1, P2 Only with DBM: GS05, GS1, GS2, GS3, GS4, GS5A BD1, BD2 GK3(A), GFK3(A), GK4, GFK4
DGM	
C	
K	
J	

D320

Distributor with ports 1" BSP .

Details

	Speed [rpm]	Pressure [bar]	Flow [l/min]
Cont.	300	250	200
Peak	500	500	400
Mass 4.5 kg			



OPTIONS	MOUNTABLE ON
DBM	GM05, GM1, GM2, GM3, GM4, GM5A P05, P1, P2 Only with DBM: GS05, GS1, GS2, GS3, GS4, GS5A BD1, BD2 GK3(A), GFK3(A), GK4, GFK4
DGM	
C	

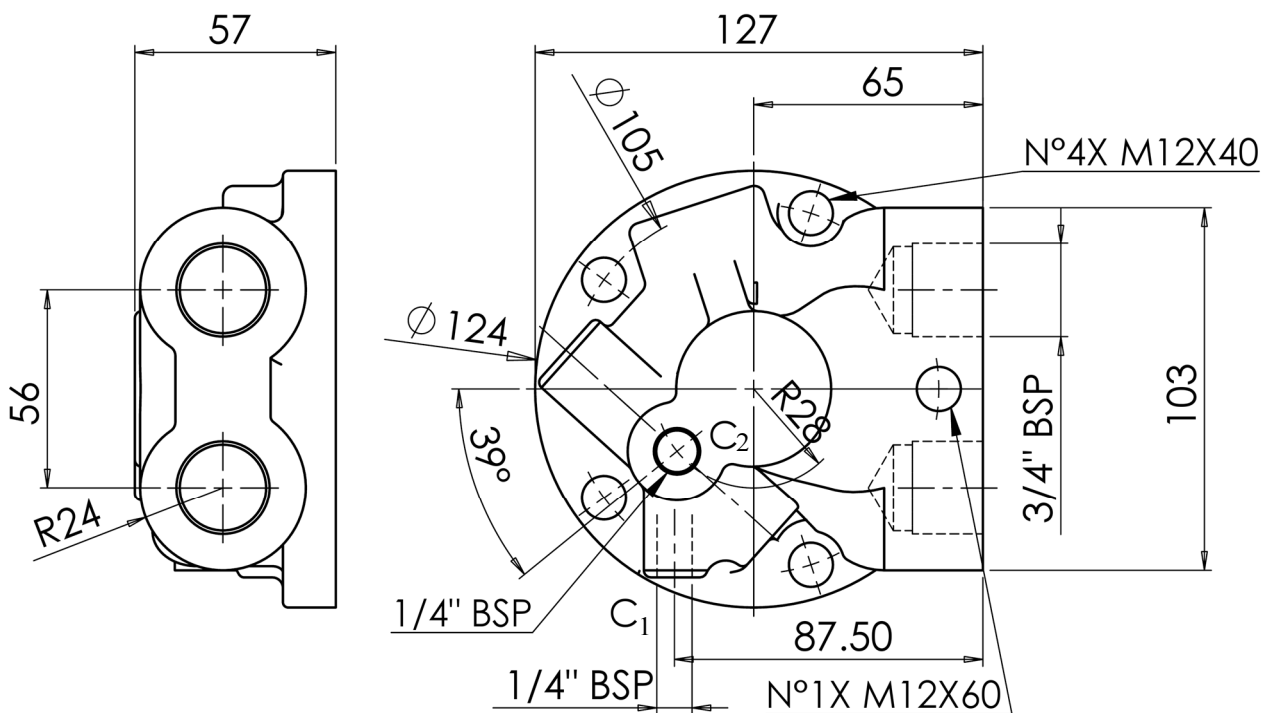
D322

Distributor with ports 3/4" BSP, with anti-cavitation valve and double pilot port C1 radial and C2 axial.

Details

	Speed [rpm]	Pressure [bar]	Flow [l/min]
Cont.	300	250	200
Peak	500	500	400

Mass 5 kg



OPTIONS		MOUNTABLE ON
DBM		GM05, GM1, GM2, GM3, GM4, GM5A P05, P1, P2
DGM		Only with DBM: GS05, GS1, GS2, GS3, GS4, GS5A BD1, BD2
C		GK3(A), GFK3(A), GK4, GFK4

D40

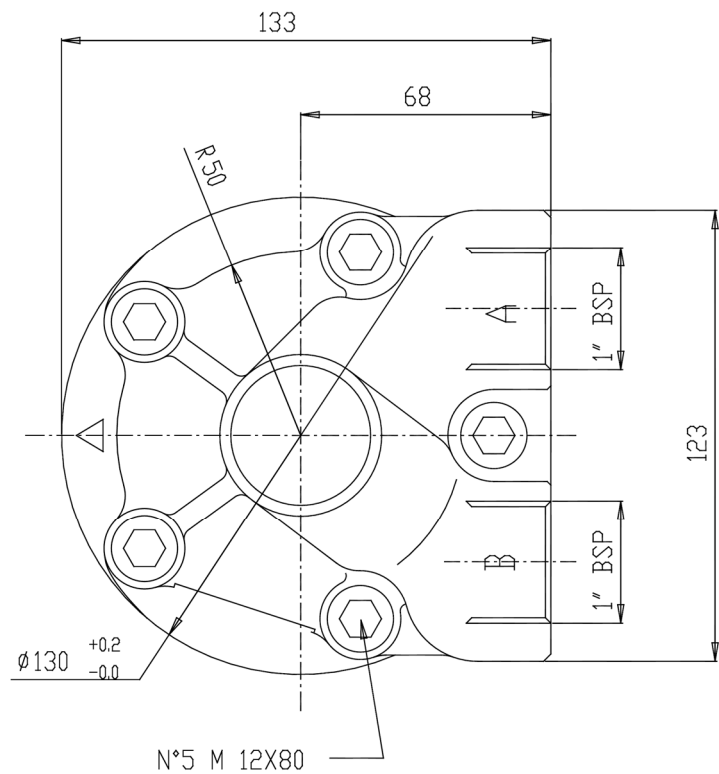
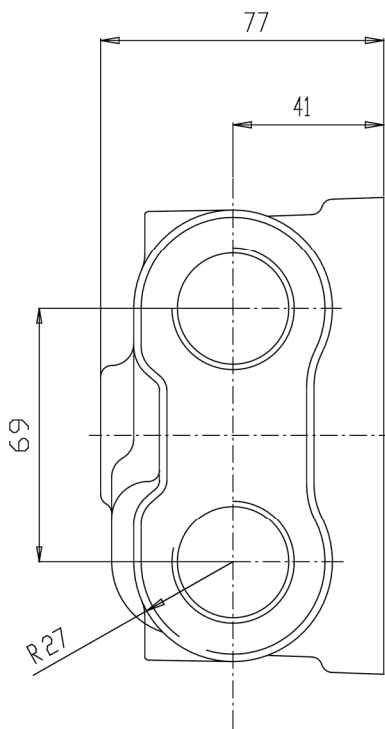
Distributor with ports 1" BSP.

STANDARD ON: GM05, GM1, GM2, GM3, GM4, GM5A, P1, P2, BD1, BD2, BD3, TF1.5, TF2.5, GK3(A), GFK3(A), GK4, GFK4, BDK3(A), BDFK3(A), BDK4, BDFK4

Details

	Speed [rpm]	Pressure [bar]	Flow [l/min]
Cont.	1600	250	200
Peak	2400	500	400

Mass 5 kg



OPTIONS	MOUNTABLE ON
DGM (not available on the T Series)	GM05, GM1, GM2, GM3, GM4, GM5A P05, P1, P2 Only with DBM: GS05, GS1, GS2, GS3, GS4, GS5A BD1, BD2 GK3(A), GFK3(A), GK4, GFK4
C	
K	
J	
HU	

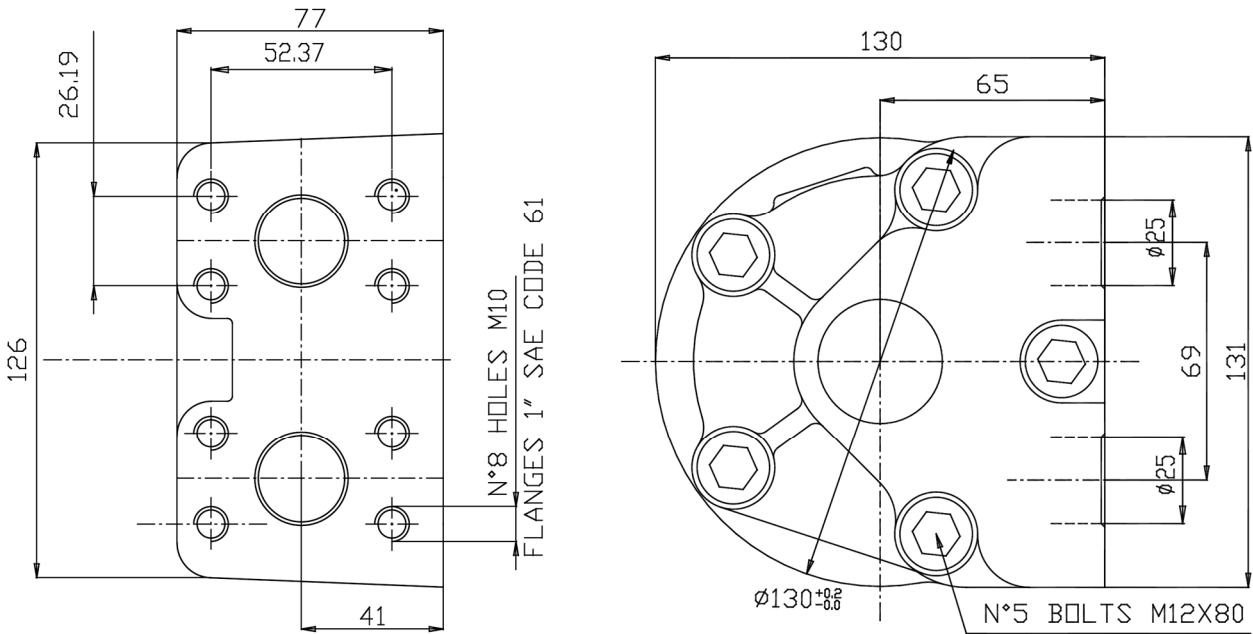
D47

Distributor with ports 1" SAE 3000 psi.

Details

	Speed [rpm]	Pressure [bar]	Flow [l/min]
Cont.	1600	250	200
Peak	2400	348	400

Mass 5 kg



OPTIONS	MOUNTABLE ON
DGM	GM05, GM1, GM2, GM3, GM4, GM5A P05, P1, P2 Only with DBM: GS05, GS1, GS2, GS3, GS4, GS5A BD1, BD2 GK3(A), GFK3(A), GK4, GFK4
C	
K	
J	
HU	

D47R

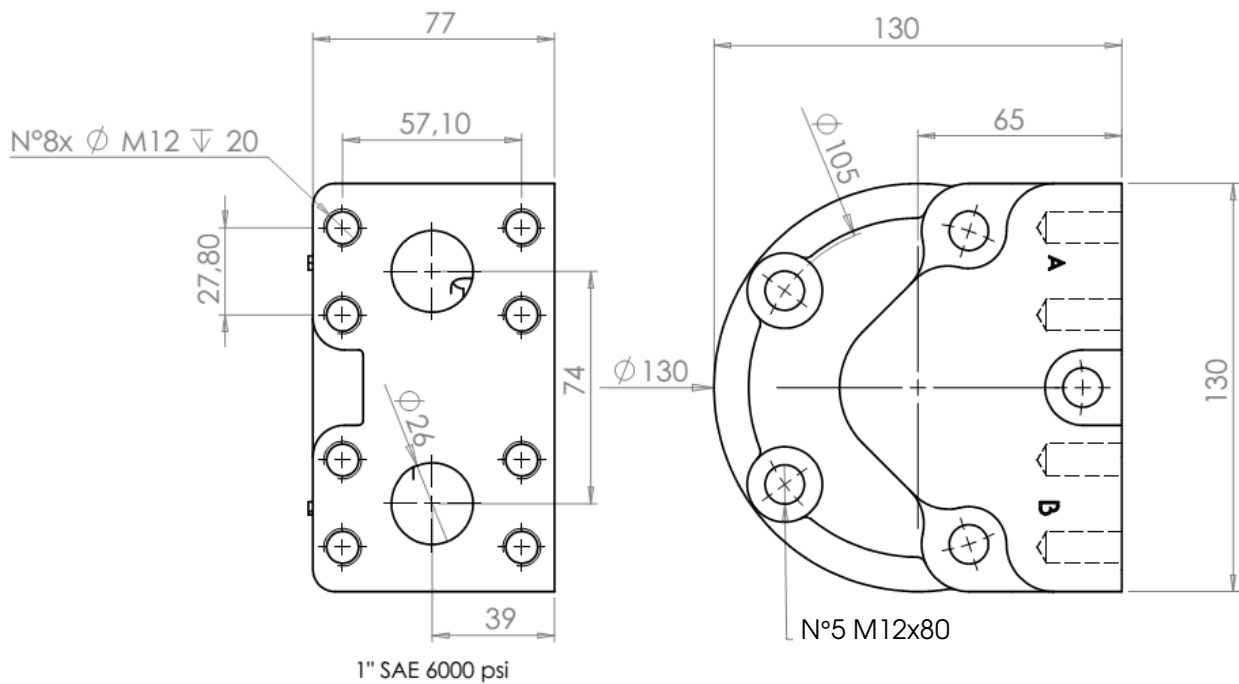
Distributor with ports 1" SAE 6000 psi.

STANDARD ON: GS05, GS1, GS2

Details

	Speed [rpm]	Pressure [bar]	Flow [l/min]
Cont.	1600	250	200
Peak	2400	420	400

Mass 5 kg



OPTIONS	MOUNTABLE ON
DGM (not available on the T Series)	GM05, GM1, GM2, GM3, GM4, GM5A P05, P1, P2 Only with DBM: GS05, GS1, GS2, GS3, GS4, GS5A BD1, BD2 GK3(A), GFK3(A), GK4, GFK4
C	
K	
J	
HU	

D47D

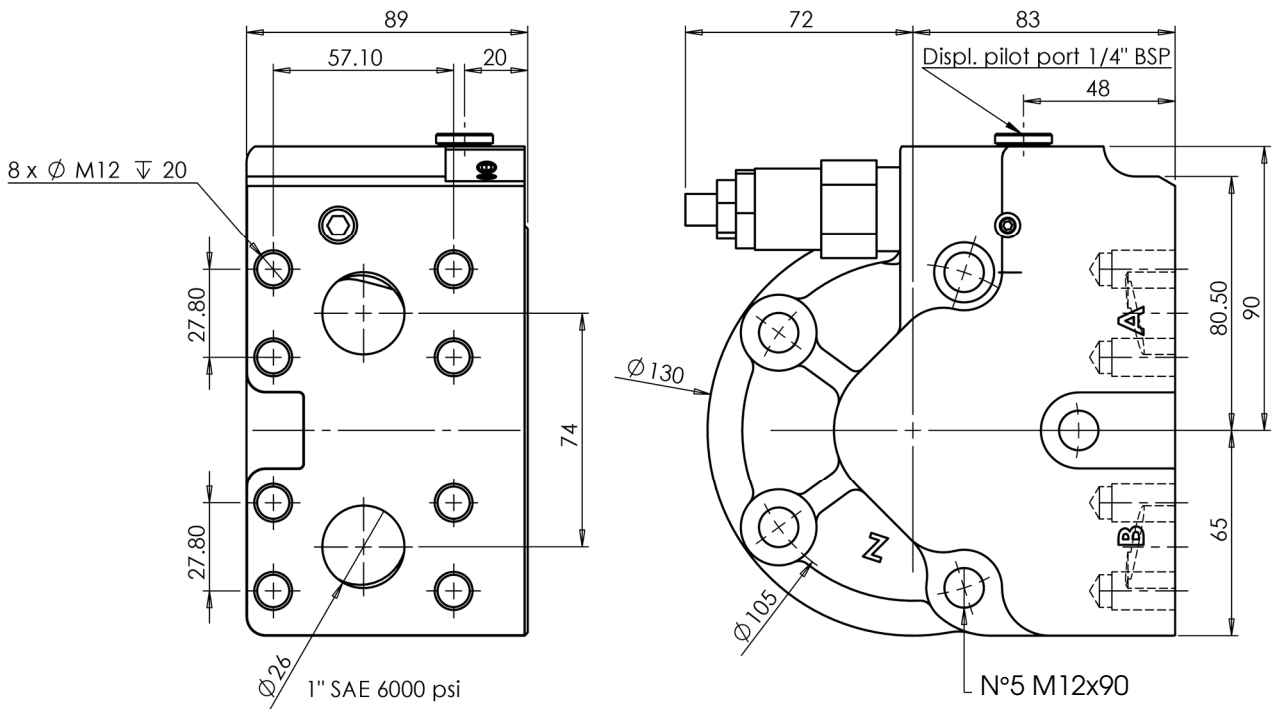
Distributor with ports 1" SAE 6000 psi, with the hydraulic valve for the pilot of the dual displacement:
Standard setting: 20 bar
Minimum setting: 5 bar

STANDARD ON: BD1A, TD1.5, TD2.5, BDK4, BDFK4

Details

	Speed [rpm]	Pressure [bar]	Flow [l/min]
Cont.	1600	250	200
Peak	2400	420	400

Mass 7.5 kg



OPTIONS		MOUNTABLE ON
DGM (not available on the T Series)		BD1(A), BD2 TD1.5, TD2.5 BDK3(A), BDFK3(A), BDK4, BDFK4
K		
J		
HU		
PI		
VPI		

D47V

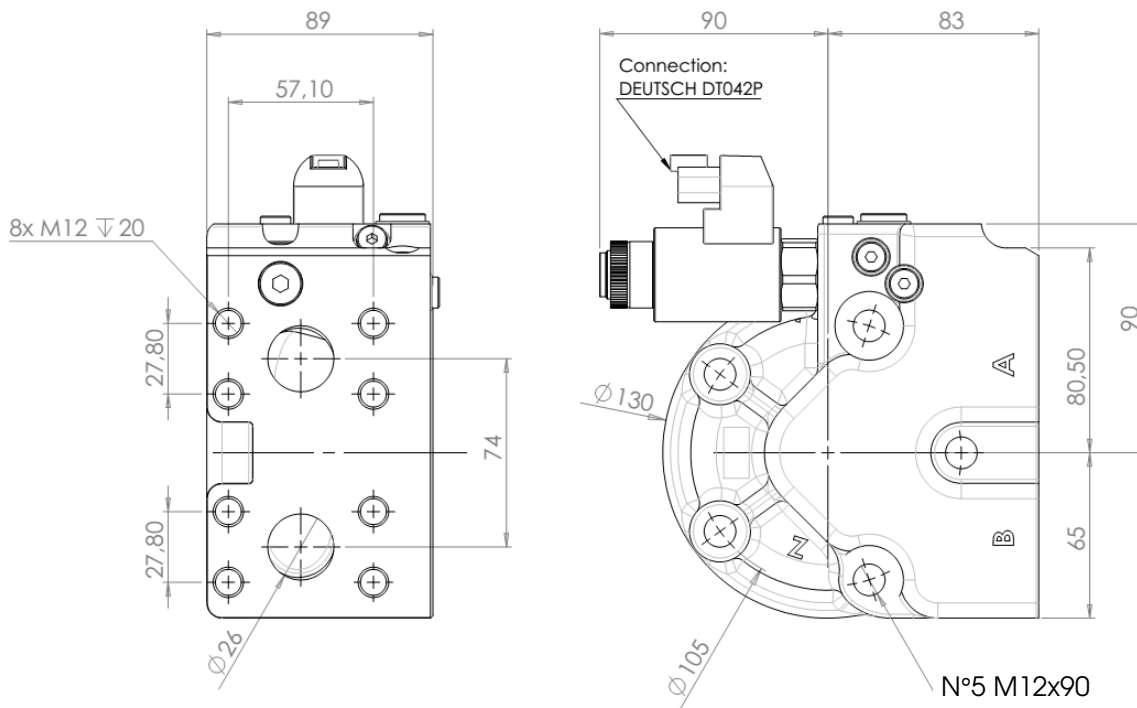
Distributor with ports 1" SAE 6000 psi, with electrical proportional valve for pilot the displacement:
Voltage: 12 Volt

STANDARD ON: BV1(A), BV2, TV1.5, TV2.5, BVK3(A), BVFK3(A), BVK4, BVFK4

Details

	Speed [rpm]	Pressure [bar]	Flow [l/min]
Cont.	1600	250	200
Peak	2400	420	400

Mass 7.5 kg



OPTIONS		MOUNTABLE ON
DGM (not available on the T Series)		BV1(A), BV2 TV1.5, TV2.5 BVK3(A), BVFK3(A), BVK4, BVFK4
K		
J		
HU		
V24		
OV		

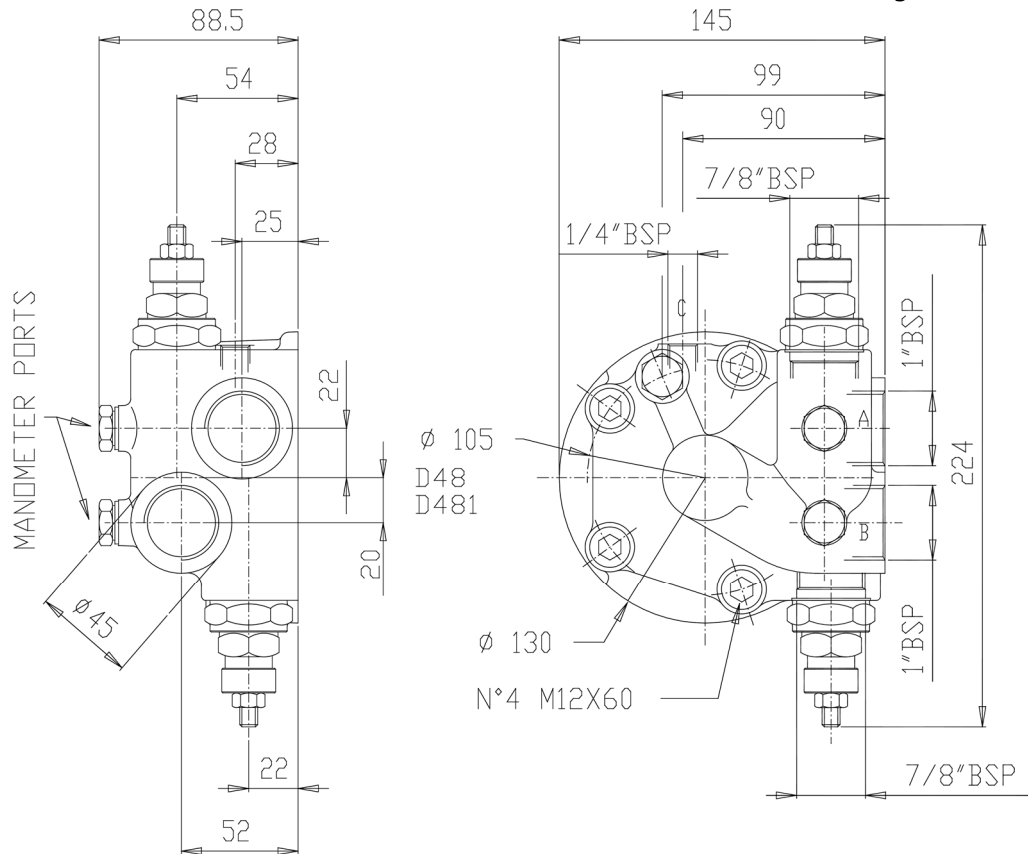
D48

Distributor with ports 1" BSP, with double sliding spool pressure relief valves,
Maximum setting pressure: 420 bar.
Standard setting: 350 bar.

Details

	Speed [rpm]	Pressure [bar]	Flow [l/min]
Cont.	1600	250	150
Peak	2400	420	300

Mass 6 kg



OPTIONS	A B	MOUNTABLE ON
DGM (not available on the T Series)		<p>GM05, GM1, GM2, GM3, GM4, GM5A P05, P1, P2</p> <p>Only with DBM: GS05, GS1, GS2, GS3, GS4, GS5A BD1, BD2 GK3(A), GFK3(A), GK4, GFK4</p>
C		
K		
J		
HU		

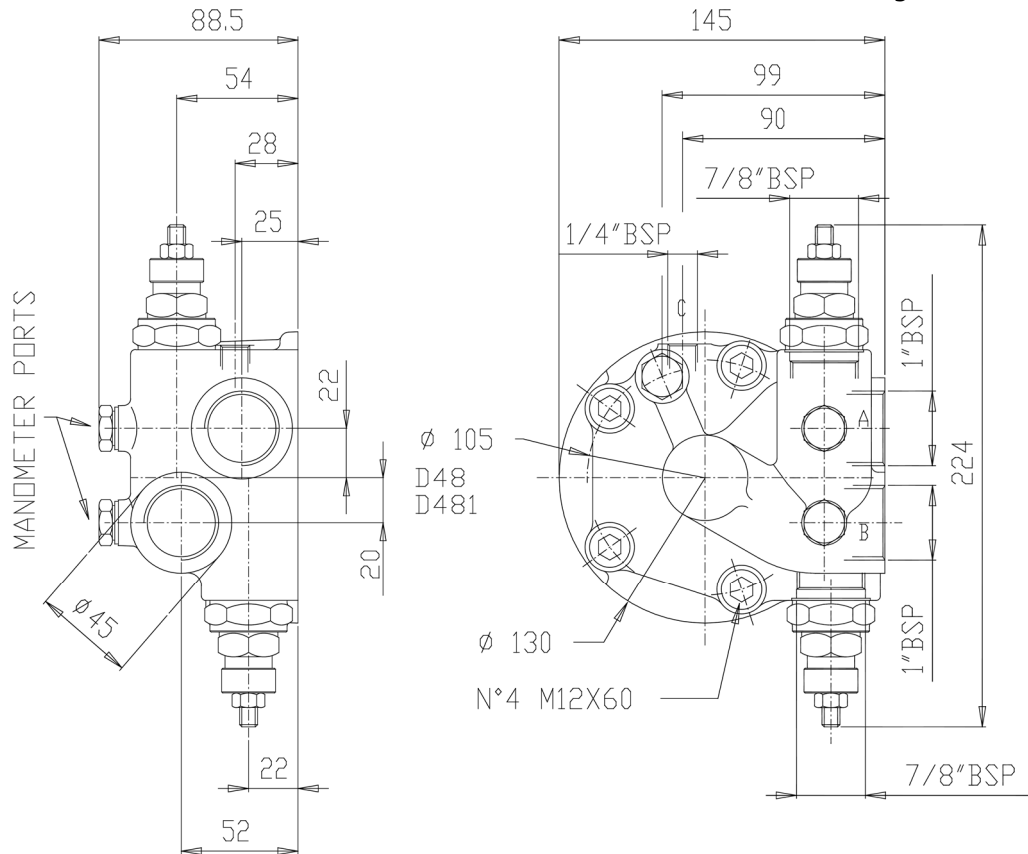
D481

Distributor with ports 1" BSP , with double sliding spool pressure relief valves, 20 lit/min at 20 bar:
Maximum setting pressure: 420 bar.
Standard setting: 350 bar.

Details

	Speed	Pressure	Flow
	[rpm]	[bar]	[l/min]
Cont.	1600	250	150
Peak	2400	420	300

Mass 6 kg



OPTIONS		MOUNTABLE ON
DGM (not available on the T Series)		<p>GM05, GM1, GM2, GM3, GM4, GM5A P05, P1, P2</p> <p>Only with DBM: GS05, GS1, GS2, GS3, GS4, GS5A BD1, BD2 GK3(A), GFK3(A), GK4, GFK4</p>
C		
K		
J		
HU		

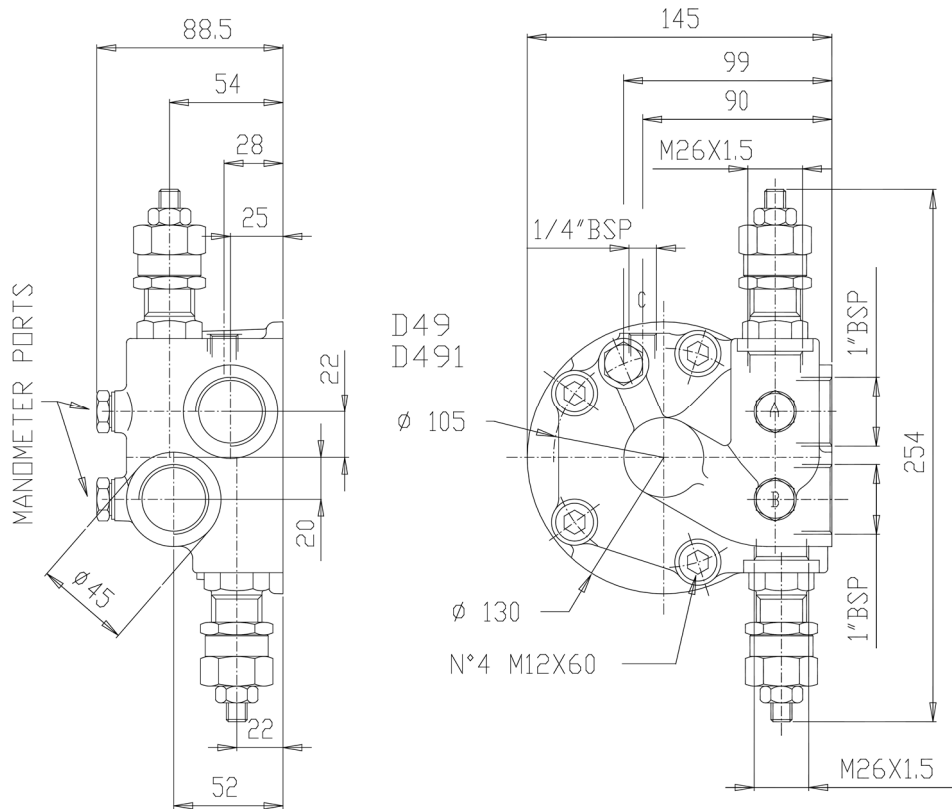
D49

Distributor with ports 1" BSP with double sliding spool pressure relief valves:
 Maximum setting pressure: 250 bar.
 Standard setting: 200 bar.

Details

	Speed [rpm]	Pressure [bar]	Flow [l/min]
Cont.	1600	250	80
Peak	2400	250	160

Mass 6 kg



OPTIONS	A	B	MOUNTABLE ON
DGM			GM05, GM1, GM2, GM3, GM4, GM5A P05, P1, P2 Only with DBM: GS05, GS1, GS2, GS3, GS4, GS5A BD1, BD2 GK3(A), GFK3(A), GK4, GFK4
C			
K			
J			
HU			

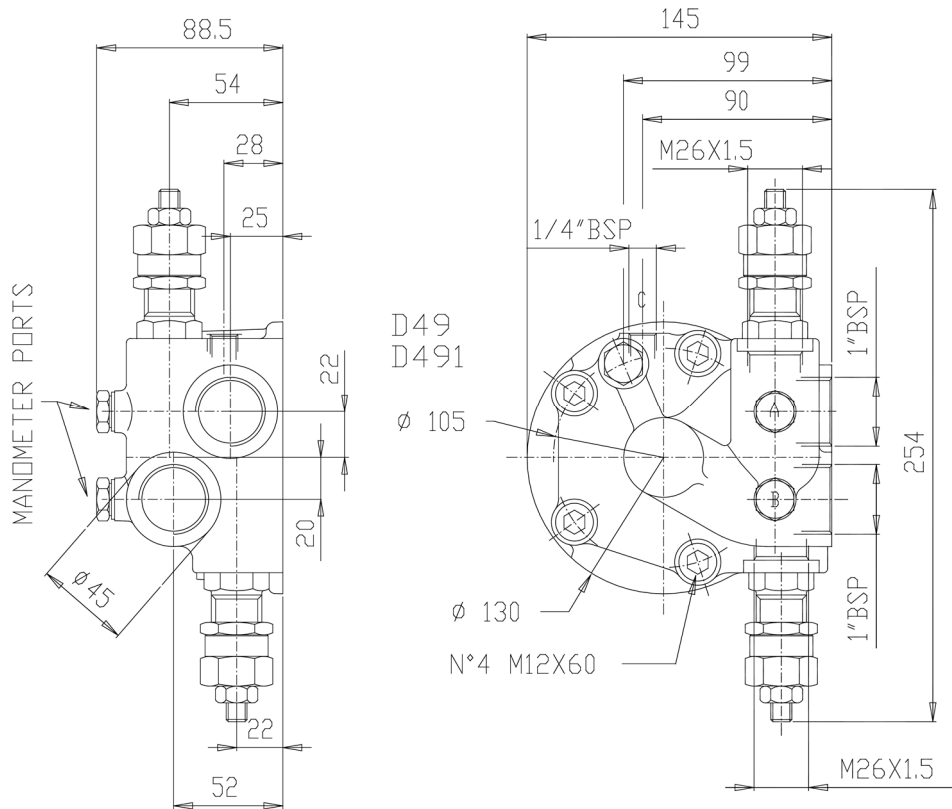
D491

Distributor with ports 1" BSP with double sliding spool pressure relief valves and shuttle valve, 20 lit/min at 20 bar:
Maximum setting pressure: 250 bar.
Standard setting: 200 bar.

Details

	Speed [rpm]	Pressure [bar]	Flow [l/min]
Cont.	1600	250	80
Peak	2400	250	160

Mass 6 kg



OPTIONS		MOUNTABLE ON
DGM		GM05, GM1, GM2, GM3, GM4, GM5A
C		P05, P1, P2
K		Only with DBM:
J		GS05, GS1, GS2, GS3, GS4, GS5A
HU		BD1, BD2
		GK3(A), GFK3(A), GK4, GFK4

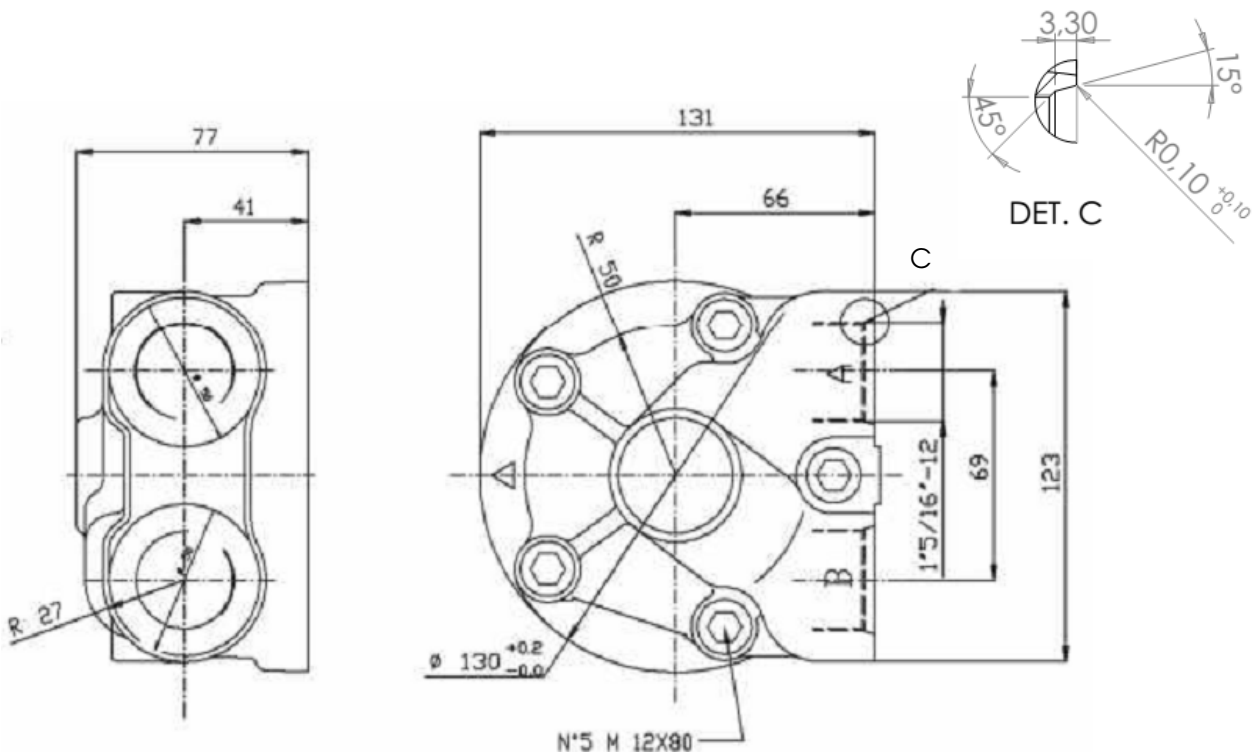
D416

Distributor with ports 1" BSP.

Details

	Speed [rpm]	Pressure [bar]	Flow [l/min]
Cont.	1600	250	200
Peak	2400	500	400

Mass 5 kg



OPTIONS	MOUNTABLE ON
DGM (not available on the T Series)	GM05, GM1, GM2, GM3, GM4, GM5A P05, P1, P2 Only with DBM: GS05, GS1, GS2, GS3, GS4, GS5A BD1, BD2 GK3(A), GFK3(A), GK4, GFK4
C	
K	
J	
HU	

D504

Distributor with ports 1" BSP, with double overcentre valve and shuttle valve for high pressure pilot:

Pilot ratio: 10:1

Max. flow : 120 lit/min

Setting : 100-350 bar

Recommened setting pressure: 1.3 x work pressure

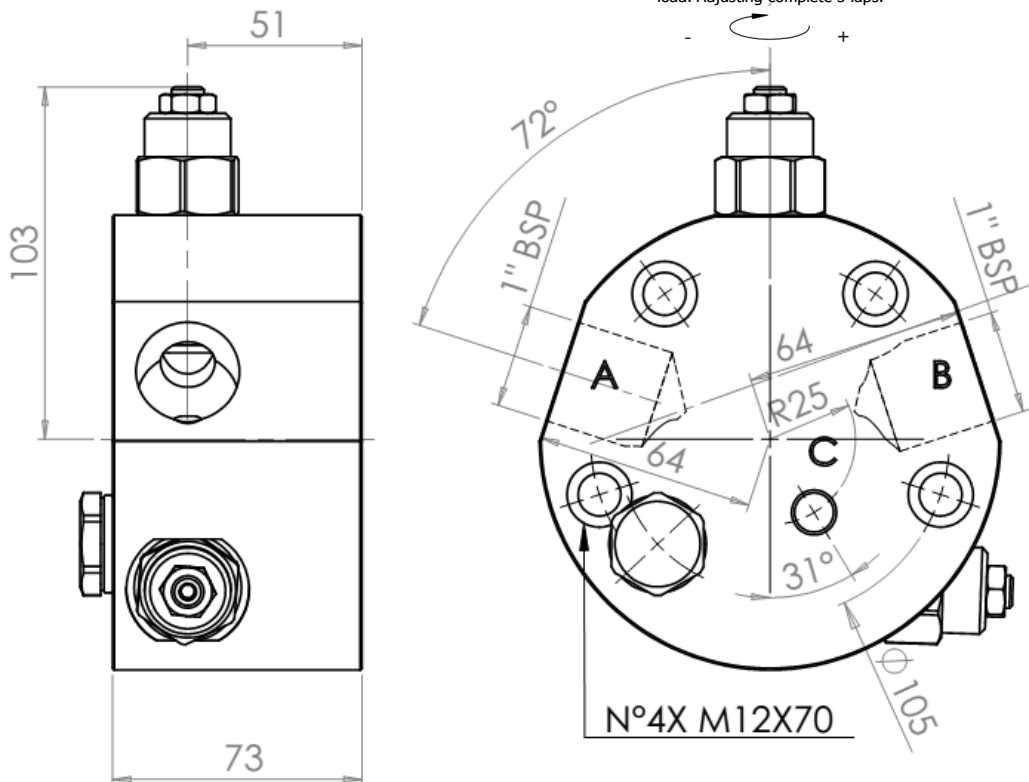
Standard setting: 210 bar

Details

	Speed	Pressure	Flow
	[rpm]	[bar]	[l/min]
Cont.	1600	250	120
Peak	2400	350	240

Mass 5 kg

Turn the screw clockwise to reduce the calibration and adjust the load. Adjusting complete 3 laps.



OPTIONS		MOUNTABLE ON
		<p>GM05, GM1, GM2, GM3, GM4, GM5A P05, P1, P2</p> <p>Only with DBM: GS05, GS1, GS2, GS3, GS4, GS5A BD1, BD2 GK3(A), GFK3(A), GK4, GFK4</p>

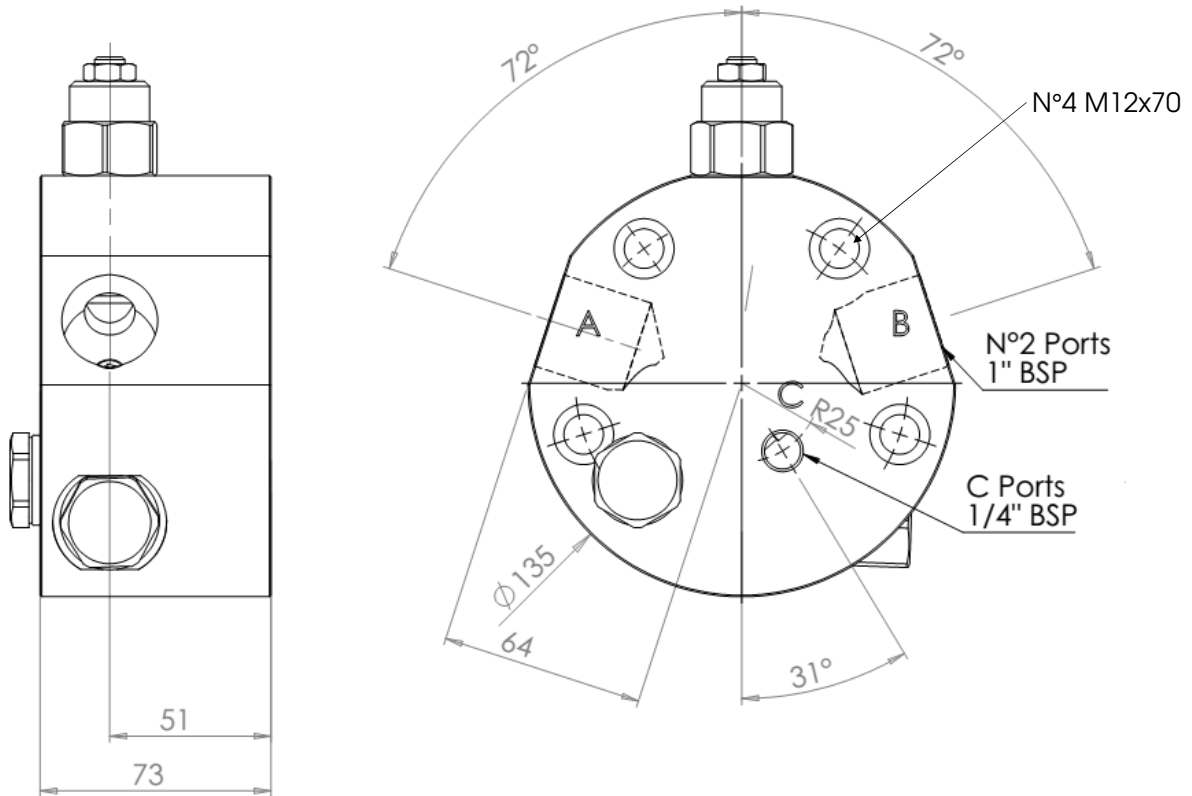
D51

Distributor with ports 1" BSP, with overcentre valve and shuttle valve for high pressure pilot:
 Pilot ratio: 10:1
 Max. flow : 120 lit/min
 Setting : 100-350 bar
 Reccomended setting pressure: 1.3 x work pressure
 Standard setting: 210 bar

Details

	Speed [rpm]	Pressure [bar]	Flow [l/min]
Cont.	1600	250	120
Peak	2400	350	240

Mass 5 kg



OPTIONS		MOUNTABLE ON
		GM05, GM1, GM2, GM3, GM4, GM5A P05, P1, P2 Only with DBM: GS05, GS1, GS2, GS3, GS4, GS5A BD1, BD2 GK3(A), GFK3(A), GK4, GFK4

D510

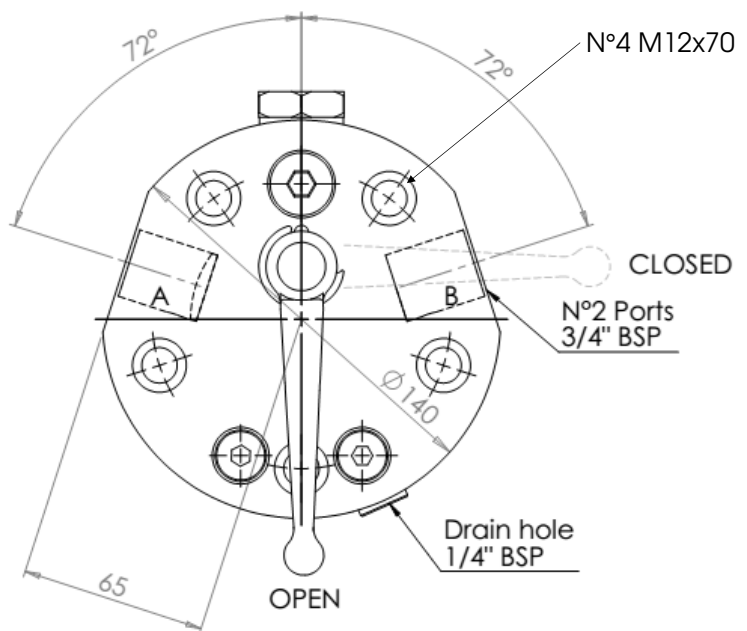
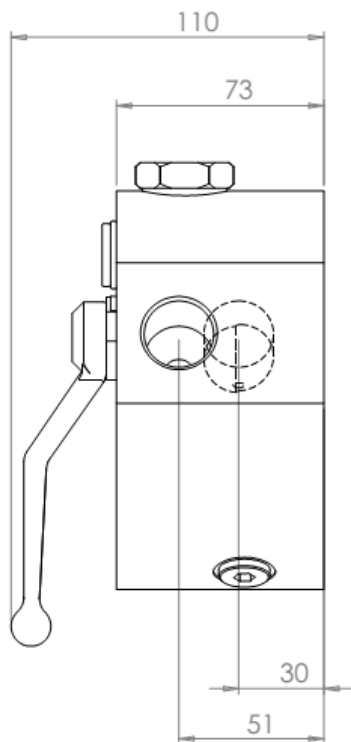
Distributor with ports 3/4" BSP.

Freewheeling type "C" pag.10.

Details

	Speed [rpm]	Pressure [bar]	Flow [l/min]
Cont.	1600	250	200
Peak	2400	500	400

Mass 5 kg



OPTIONS		MOUNTABLE ON
	A B	GM05, GM1, GM2, GM3, GM4, GM5A
		P05, P1, P2
		Only with DBM:
		GS05, GS1, GS2, GS3, GS4, GS5A
		BD1, BD2
		GK3(A), GFK3(A), GK4, GFK4

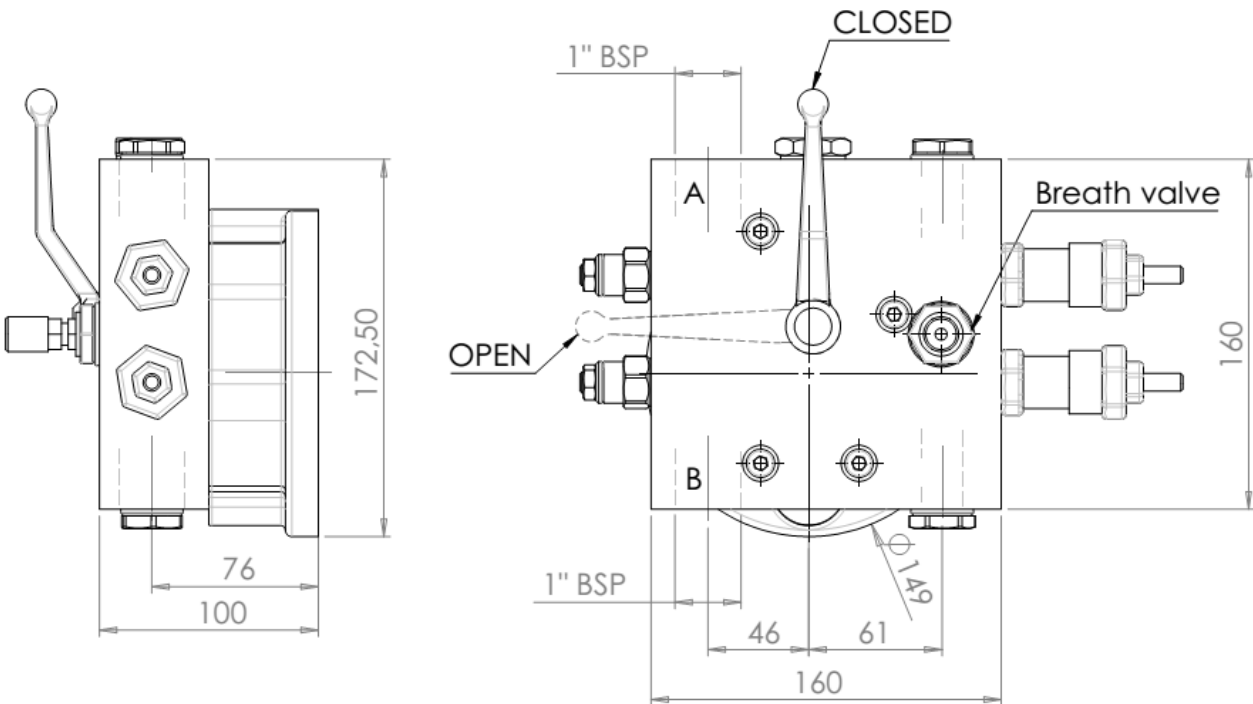
D524

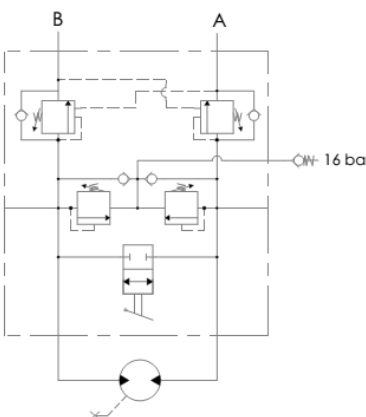
Distributor with ports 1" BSP with double overcentre valve, double sliding spool pressure relief valves, relief valve and with shuttle valve for high pressure pilot:
 Pilot ratio: 4.5:1
 Minimum setting pressure: 140-350 bar
 Recommended setting pressure: 1.3 x work pressure
 Standard setting: 210 bar

Freewheeling type "C" pag.10.

Details

	Speed [rpm]	Pressure [bar]	Flow [l/min]
Cont.	1600	250	60
Peak	2400	350	120
Mass 5 kg			



OPTIONS		<p>MOUNTABLE ON</p> <p>GM05, GM1, GM2, GM3, GM4, GM5A P05, P1, P2</p> <p>Only with DBM: GS05, GS1, GS2, GS3, GS4, GS5A BD1, BD2 GK3(A), GFK3(A), GK4, GFK4</p>

D90

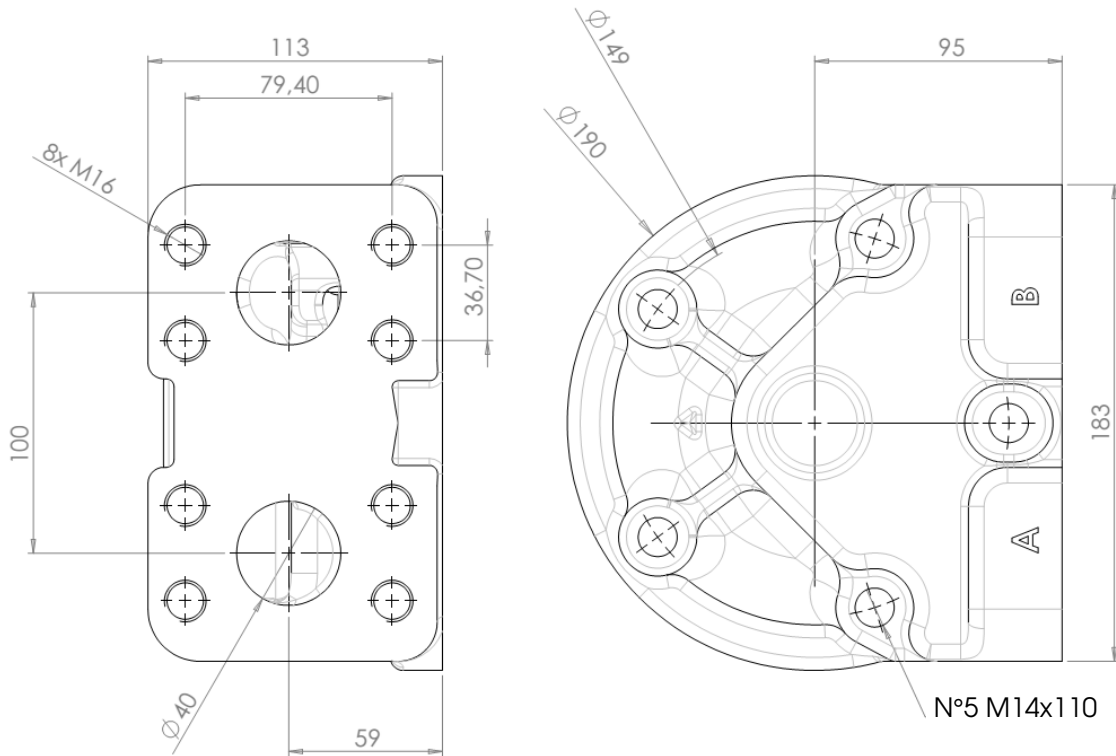
Distributor with ports 1" 1/2 SAE 6000 psi.

STANDARD ON: GM6, BD5, GS3, GS4, GS5A, L7B

Details

	Speed [rpm]	Pressure [bar]	Flow [l/min]
Cont.	700	250	500
Peak	1200	420	1000

Mass 14.5 kg



OPTIONS	MOUNTABLE ON
K	GM3, GM4, GM5A, GM6 GS3, GS4, GS5A, GS6A L7B S7B BD5, BD6
J	
HU	

D907

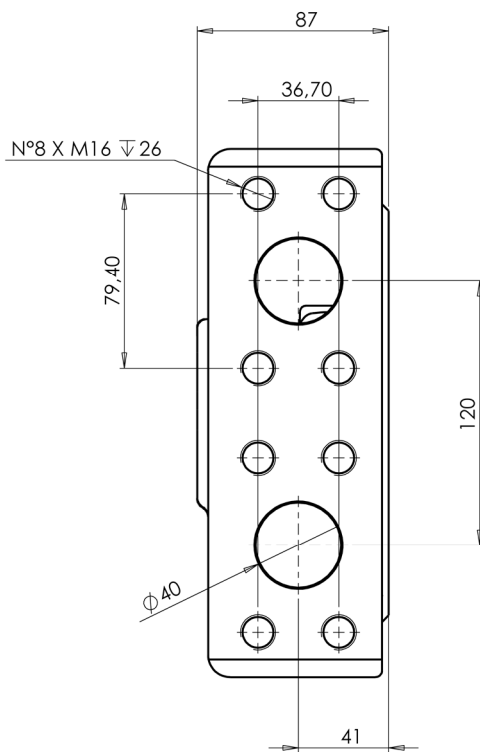
Distributor with ports 1" 1/2 SAE 6000 psi.

STANDARD ON: TF3.5, TS8F(w).

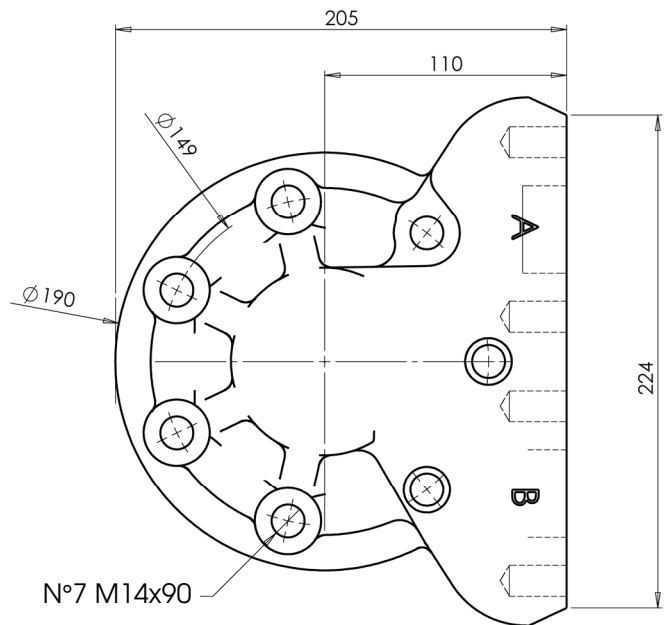
Details

	Speed [rpm]	Pressure [bar]	Flow [l/min]
Cont.	700	250	500
Peak	1200	420	1000

Mass 13.5 kg



1" 1/2 SAE 6000psi



OPTIONS	MOUNTABLE ON
K	TF3.5 TS8F(W)
J	
HU	

D907D

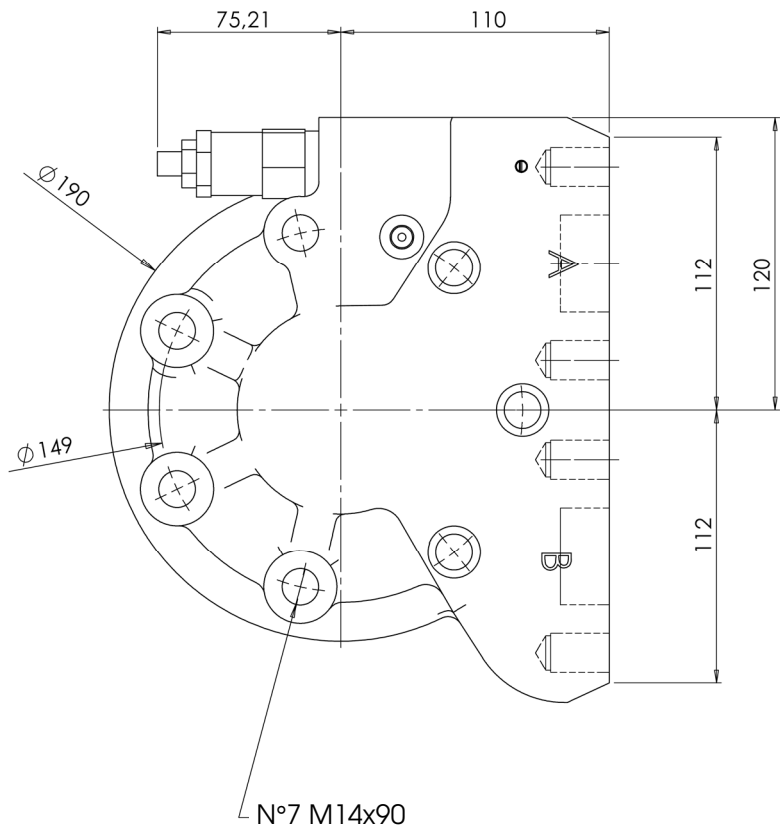
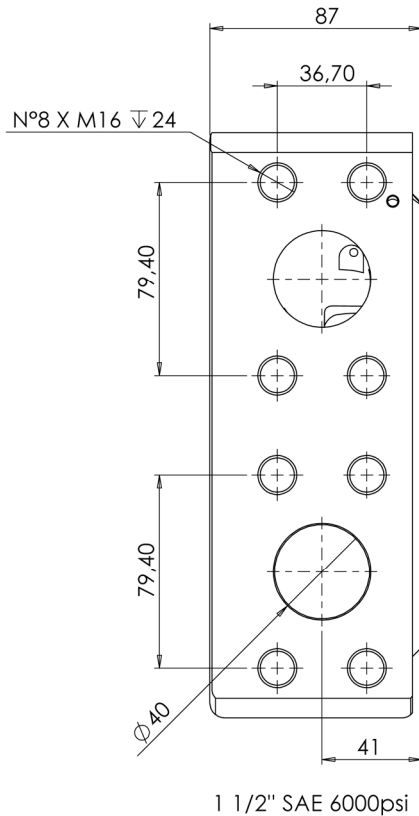
Distributor with ports 1" 1/2 SAE 6000 psi, with the hydraulic valve for the pilot of the dual displacement:
Standard setting: 20 bar
Minimum setting: 5 bar

STANDARD ON: TD3.5, TS8DF(W)

Details

	Speed [rpm]	Pressure [bar]	Flow [l/min]
Cont.	700	400	500
Peak	1200	420	1000

Mass 14 kg



OPTIONS		MOUNTABLE ON
K		<p>TD3.5 TS8DF(W)</p>
J		
HU		
PI		
VPI		

D907V

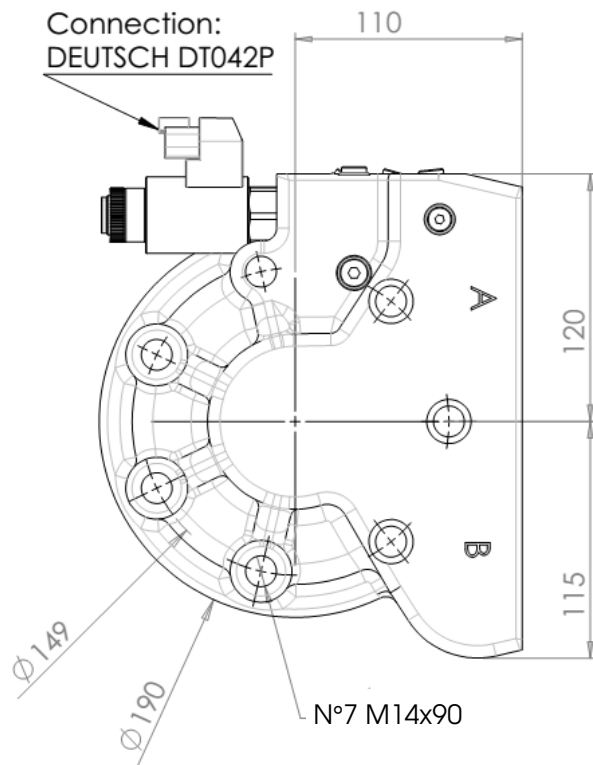
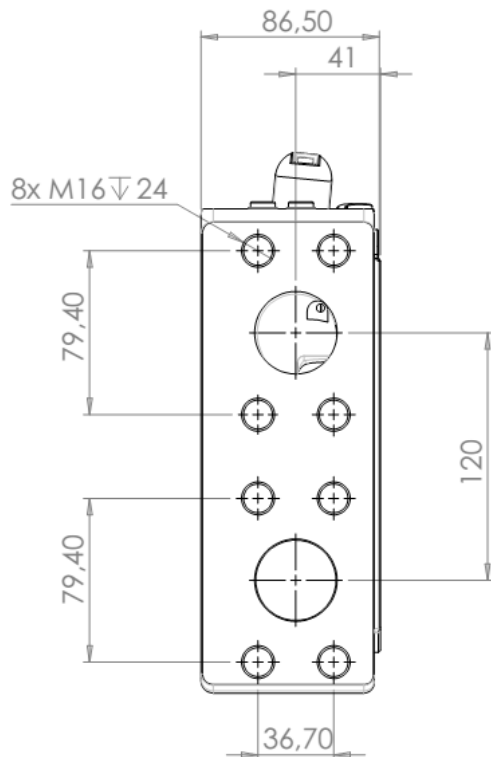
Distributor with ports 1" 1/2 SAE 6000 psi, with electrical proportional valve for pilot the displacement:
Voltage: 12 Volt

STANDARD ON: TV3.5, TS8VF(W)

Details

	Speed [rpm]	Pressure [bar]	Flow [l/min]
Cont.	700	400	500
Peak	1200	420	1000

Mass 14 kg



OPTIONS		MOUNTABLE ON
K		<p>TV3.5 TS8VF(W)</p>
J		
HU		
V24		
OV		

D250

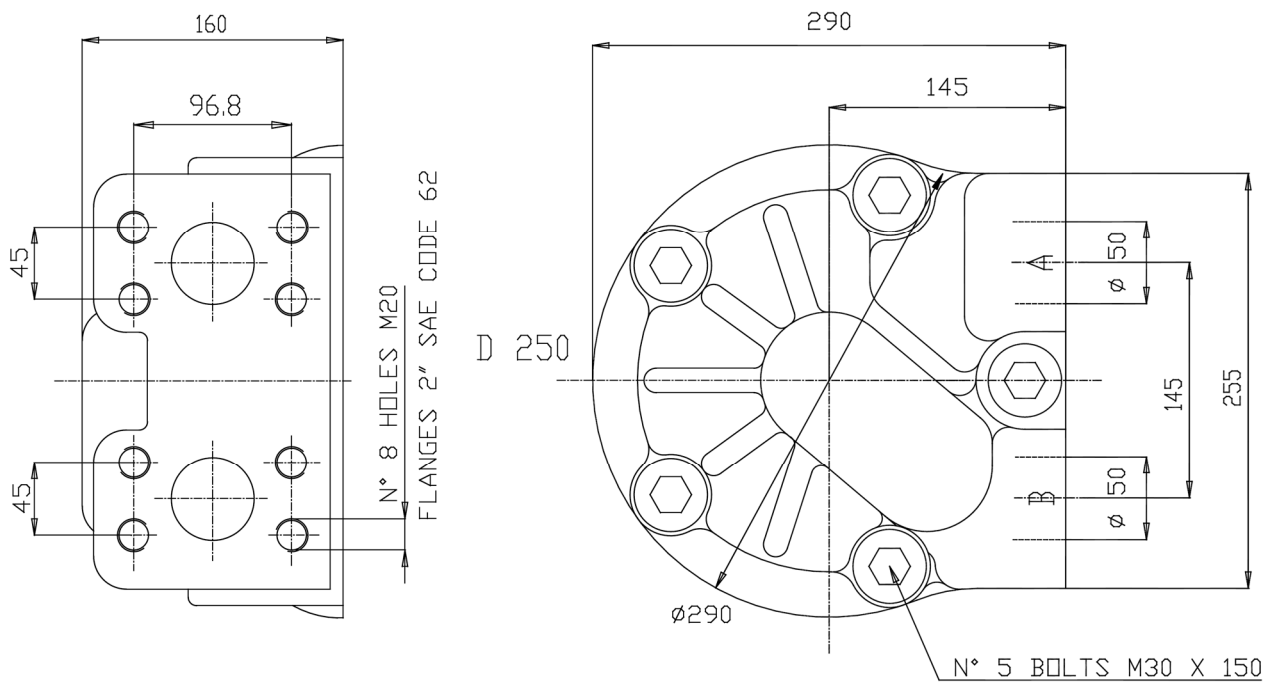
Distributor with ports 2" SAE 6000 psi.

STANDARD ON: GS6A, L7B, L9, BD6, S7B, S9

Details

	Speed	Pressure	Flow
	[rpm]	[bar]	[l/min]
Cont.	500	250	1000
Peak	1000	420	2000

Mass 50 kg



OPTIONS	MOUNTABLE ON
J	GM6 GS6A L7B, L9 S7B, S9 BD6



SAI

WORLDWIDE



SAI CANADA

6105 Blvd. Couture St. Leonard
Quebec CANADA

Ph. +1 514-323-4552
Fax +1 514-323-8780
saicanada@saihyd.com
www.saihyd.com



SAI GREAT BRITAIN

Unit 8, Honywood Road Business Park,
Basildon SS14 3HW UK
Ph. +44 1268 272030
Fax +44 1268 272040
info@saigb.co.uk
www.saigb.com.uk



SAI JAPAN

Keisho ARK2 201 4-29-12 Kamiogi
Suginami-Ku 1670043 Tokyo, JAPAN
Ph. +81 3-3390-5500
Fax +81 3-3390-5501
info@saijapan.jp
www.saijapan.jp



SAI USA

168 E Ridge Road Linwood,
PA 19061 USA

Ph. +1 610-497-0190
Fax +1 610-497-0194
info@saihyd.com
www.saihyd.com



SAI UKRAINE

Ph. +380 66 449 7992
saihydromotors@saihydromotors.com.ua
www.saihydromotors.com.ua



SAI CHINA

1st Floor, 2nd Building, No.1281, Jinhu Rd.,
Pudong 201206, Shanghai, PRC
Ph. +86 21 5031 5248
Fax +86 21 5031 5246
saichina@saihydro.com
www.saihydro.com



SAI BRAZIL

Ph. + 55 16 9739-0790
saihidraulica@saihidraulica.com.br
www.saihidraulica.com.br



SAI SOUTH AFRICA

Suite 244 Postnet Private Bag X5061 Stellenbosch
7599 Western Cape SOUTH AFRICA
Ph. +27 (0) 21 905 0835
Fax +27 (0) 21 905 7375
info@saihydraulics.co.za
www.saihydraulics.co.za



SAI INDIA

26/C, Doddanekkundi I.A. Phase 1 Post
Mahadevapura Bangalore 560048 INDIA
Ph. +91 80 4260 5509
Fax +91 80 4260 5506
sales-domestic@saihydromotor.com
www.saihydromotor.com



SAI

Via Olanda 51, 41122 Modena (MO) ITALY
Ph. +39 059 420111 Fax +39 059 451260
saipa@saipa.it
www.saipa.com